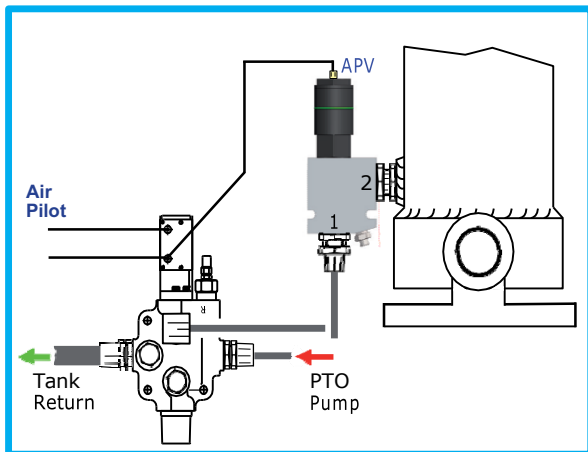


The Industry Benchmark OPAPV Hoist Blocking Valve is now more efficient with greater flow capacity and it is smaller!

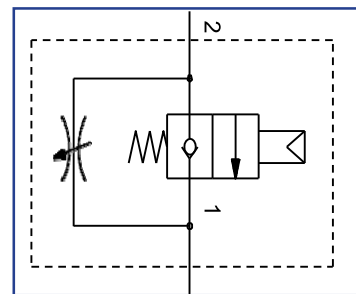
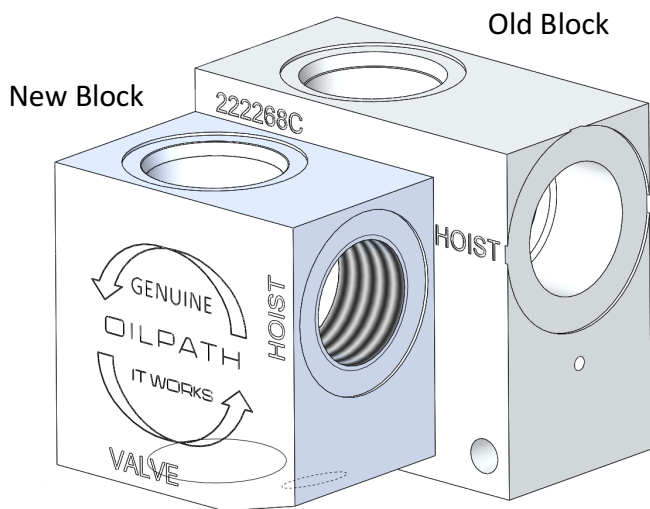


Air Pilot Operation

Function	DC1	DC2	APV1
Raise	Pressure	Vent	Vent
Hold	Vent	Vent	Vent
Lower	Vent	Pressure	Pressure

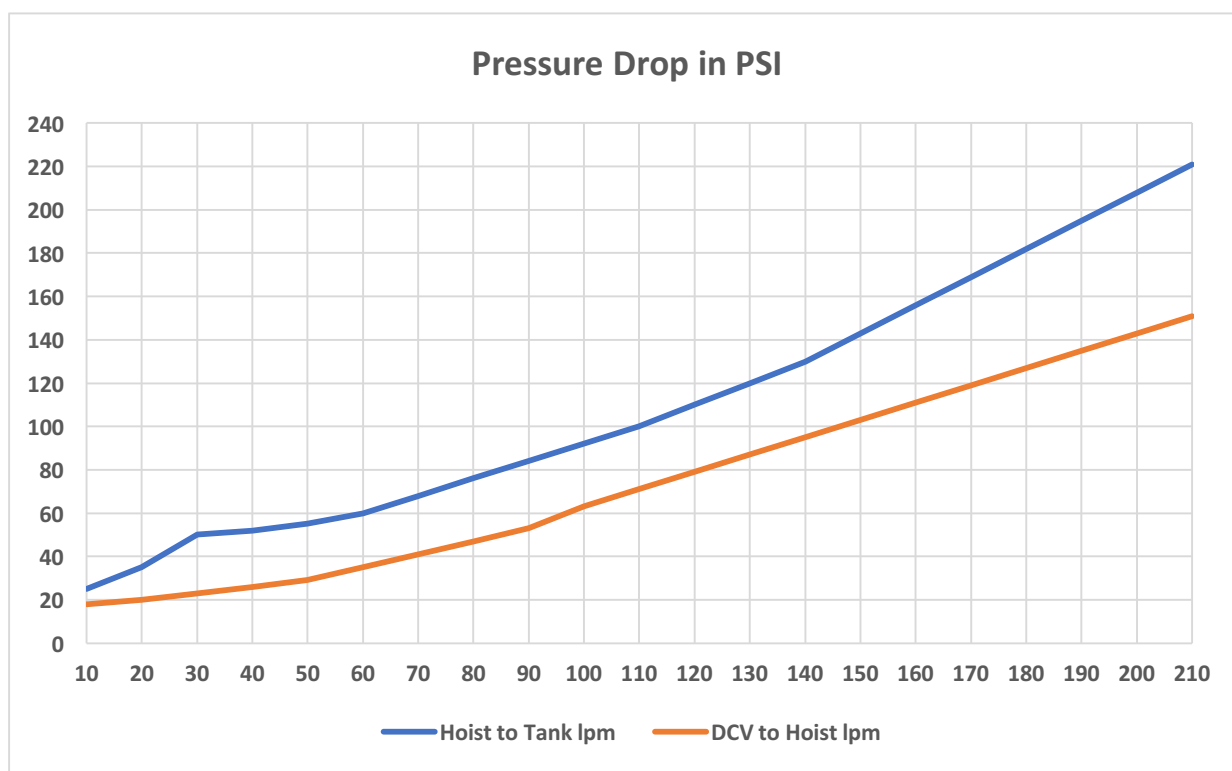


- Flow Capacity increased to 200 lpm see chart
- Smaller body footprint (see overleaf)
- Large ratio balanced pneumatic cylinder ensures fast efficient response
- Extremely low and improved pressure drop for fast lowering see chart
- Extremely low (2.1bar) air pressure required for operation
- Emergency slow lowering facility
- Easy installation to new or existing vehicles
- Valve clamping options available on request



Schematic Diagram

Block height shorter by 11mm and 24mm on width



Important Information

This valve must be installed by appropriately trained Hydraulics Operative as per the installation diagram overleaf.

Do not attempt to disassemble this valve as it is designed to be maintenance free, any interference with this assembly will void all warranties and liabilities.

The only exception to the above is the external BS-029 neoprene "Breather" O-ring that needs to be replaced after 5 years or sooner if there are visible signs of deterioration.