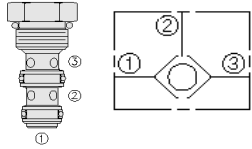


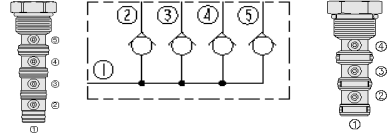
HYDRAFORCE CARTRIDGE QUICK REFERENCE

Load Shuttle, Ball-Type Valves



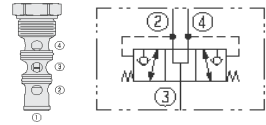
Cartridge Size	Flow	Line Body				Seals
LS04-B30-0-N	5 lpm / 1.3 gpm	N/A				N = Buna N
HLS06-30-0-N	7.6 lpm / 2 gpm	N/A				N = Buna N
HLS06-B30-0-N	7.6 lpm / 2 gpm	N/A				N = Buna N
LS08-30-4T-N	19 lpm / 5 gpm	4T	Alum.	7024740	7/16" UNF	N = Buna N
LS10-30-6T-N	30 lpm / 8 gpm	6T	Alum.	7024360	9/16" UNF	N = Buna N
LS50-30-6TD-P	30 lpm / 8 gpm	6TD	Duct. Iron	7151500	9/16" UNF	P = Polyurethane

Load Shuttle (Check Valve) Network



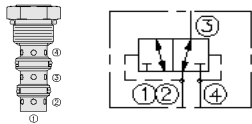
Cartridge Size	Flow	Line Body				Seals
LS10-40-6T-N	1.9 lpm / 0.5 gpm	6T	Alum.	7024460	9/16" UNF	N = Buna N
LS10-50-6T-N	1.9 lpm / 0.5 gpm	6T	Alum.	7022820	9/16" UNF	N = Buna N

Inverted Shuttle Valve



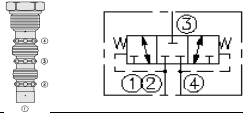
Cartridge Size	Flow	Line Body				Seals
LS10-41-6T-N	15 lpm / 4 gpm	6T	Alum.	7024460	9/16" UNF	N = Buna N

Low Side (Hot Oil) Shuttle Closed in Transition, Springless



Cartridge Size	Flow	Line Body				Seals
HS10-42-6T-N	38 lpm / 10 gpm	6T	Alum.	7024460	9/16" UNF	N = Buna N
HS50-42-6TD-N	38 lpm / 10 gpm	6TD	Duct. Iron	7151700	9/16" UNF	N = Buna N
HS52-42-12TD-N	132 lpm / 35 gpm	12TD	Duct. Iron	7150720	1-1/16" UNF	N = Buna N

Low Side (Hot Oil) Shuttle, Spring Centered



Cartridge Size	Flow	Line Body				Seals
HS50-43-6TD-N	45 lpm / 12 gpm	6TD	Duct. Iron	7151700	9/16" UNF	N = Buna N
HS52-43-12TD-N	113 lpm / 30 gpm	12TD	Duct. Iron	7150720	1-1/16" UNF	N = Buna N