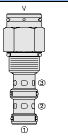
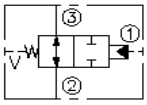
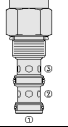
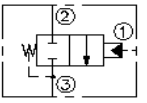
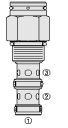
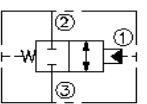
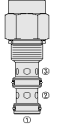
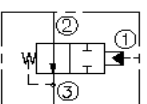
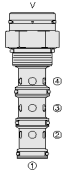
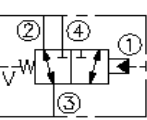
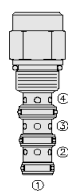
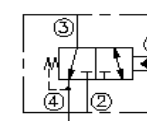
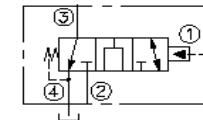
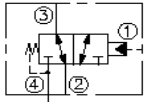
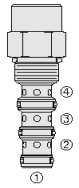


HYDRAFORCE CARTRIDGE QUICK REFERENCE

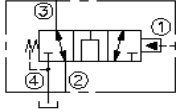
Piloted, 2-Way Spool Valve, Normally Open, External Vent		Cartridge Size	Flow	Line Body			Seals	
 	PD10-30-6T-N-*	38 lpm / 10 gpm	6T	Alum.	7024360	9/16" UNF	N = Buna N	
	PD12-30-12T-N-*	114 lpm / 30 gpm	12T	Alum.	7022340	1-1/16" UNF	N = Buna N	
	Pressure Range (* Select Pressure Range)							
	40 = 2.8bar/40PSI	60 = 4.1bar/60PSI	110 = 7.6bar/110PSI	170 = 11.7bar/170PSI				
	110 = 7.6bar/110PSI	170 = 11.7bar/170PSI						
Piloted, 2-Way Spool Valve, Normally Closed, Internal Vent		Cartridge Size	Flow	Line Body			Seals	
 	PD10-32-6T-N-*	38 lpm / 10 gpm	6T	Alum.	7024360	9/16" UNF	N = Buna N	
	PD12-32-12T-N-*	114 lpm / 30 gpm	12T	Alum.	7022340	1-1/16" UNF	N = Buna N	
	Pressure Range (* Select Pressure Range)							
	40 = 2.8bar/40PSI	60 = 4.1bar/60PSI	110 = 7.6bar/110PSI	170 = 11.7bar/170PSI				
	110 = 7.6bar/110PSI	170 = 11.7bar/170PSI						
Piloted, 2-Way Spool Valve, Normally Closed, External Vent		Cartridge Size	Flow	Line Body			Seals	
 	PD10-34-6T-N-*	38 lpm / 10 gpm	6T	Alum.	7024360	9/16" UNF	N = Buna N	
	PD12-34-12T-N-*	114 lpm / 30 gpm	12T	Alum.	7022340	1-1/16" UNF	N = Buna N	
	Pressure Range (* Select Pressure Range)							
	40 = 2.8bar/40PSI	60 = 4.1bar/60PSI	110 = 7.6bar/110PSI	170 = 11.7bar/170PSI				
	110 = 7.6bar/110PSI	170 = 11.7bar/170PSI						
Piloted, 2-Way Spool Valve, Normally Open, Internal Vent		Cartridge Size	Flow	Line Body			Seals	
 	PD10-35-6T-N-*	38 lpm / 10 gpm	6T	Alum.	7024360	9/16" UNF	N = Buna N	
	PD12-35-12T-N-*	114 lpm / 30 gpm	12T	Alum.	7022340	1-1/16" UNF	N = Buna N	
	Pressure Range (* Select Pressure Range)							
	40 = 2.8bar/40PSI	60 = 4.1bar/60PSI	110 = 7.6bar/110PSI	170 = 11.7bar/170PSI				
	110 = 7.6bar/110PSI	170 = 11.7bar/170PSI						
Piloted, 3-Way Spool Valve, External Vent		Cartridge Size	Flow	Line Body			Seals	
 	PD10-40-6T-N-*	30 lpm / 8 gpm	6T	Alum.	7024460	9/16" UNF	N = Buna N	
	PD12-40-10T-N-*	114 lpm / 30 gpm	10T	Alum.	7022480	7/8" UNF	N = Buna N	
	PD16-40-12T-N-*	170 lpm / 45 gpm	12T	Alum.	7023450	9/16" UNF	N = Buna N	
	PD42-M40-16T-N-160	265 lpm / 70 gpm	16T	Alum.	7029540	9/16" UNF	N = Buna N	
	Pressure Range (* Select Pressure Range)							
	40 = 2.8bar/40PSI	60 = 4.1bar/60PSI	110 = 7.6bar/110PSI	170 = 11.7bar/170PSI	M5.0 = 5bar	M14.0 = 14bar	M15.0 = 15bar	
	110 = 7.6bar/110PSI	170 = 11.7bar/170PSI						
60 = 4.1bar/60PSI	80 = 5.5bar/80PSI	110 = 7.6bar/110PSI	170 = 11.7bar/170PSI					
160 = 11bar/160PSI								
Piloted, 3-Way Spool Valve, Internal Vent		Cartridge Size	Flow	Line Body			Seals	
  <p>Open Transition:</p> 	PD10-41** 6T-N-*	45 lpm / 12 gpm	6T	Alum.	7024460	9/16" UNF	N = Buna N	
	PD12-41** 10T-N-*	114 lpm / 30 gpm	10T	Alum.	7022480	7/8" UNF	N = Buna N	
	PD16-41** 12T-N-*	170 lpm / 45 gpm	12T	Alum.	7023450	9/16" UNF	N = Buna N	
	PD42-M41** 16T-N-160	265 lpm / 70 gpm	16T	Alum.	7029540	9/16" UNF	N = Buna N	
	Options (** Select an option)							
	N = Open Transition	T = Tall Cap						
	N = Open Transition							
N = Open Transition								
N = Open Transition								
Pressure Range (* Select Pressure Range)								
60 = 4.1bar/60PSI	110 = 7.6bar/110PSI	170 = 11.7bar/170PSI	200 = 14bar/200PSI					
60 = 4.1bar/60PSI	110 = 7.6bar/110PSI	170 = 11.7bar/170PSI						
60 = 4.1bar/60PSI	110 = 7.6bar/110PSI	170 = 11.7bar/170PSI						
160 = 11bar/160PSI								

HYDRAFORCE CARTRIDGE QUICK REFERENCE

Piloted, 3-Way Spool, Internal Vent

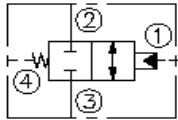
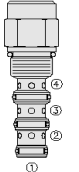


Open Transition:



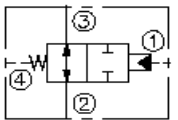
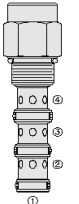
Cartridge Size	Flow	Line Body				Seals
PD10-42**6T-N-*	38 lpm / 10 gpm	6T	Alum.	7024460	9/16" UNF	N = Buna N
PD12-42**10T-N-*	114 lpm / 30 gpm	10T	Alum.	7022480	7/8" UNF	N = Buna N
PD16-42**12T-N-*	170 lpm / 45 gpm	12T	Alum.	7023450	9/16" UNF	N = Buna N
PD42-M42**16T-N-160	265 lpm / 70 gpm	16T	Alum.	7029540	9/16" UNF	N = Buna N
Options (** Select an option)						
N = Open Transition						
N = Open Transition						
N = Open Transition						
N = Open Transition						
Pressure Range (* Select Pressure Range)						
60 = 4.1bar/60PSI	110 = 7.6bar/110PSI	170 = 11.7bar/170PSI	200 = 14bar/200PSI			
60 = 4.1bar/60PSI	110 = 7.6bar/110PSI	170 = 11.7bar/170PSI				
60 = 4.1bar/60PSI	110 = 7.6bar/110PSI	170 = 11.7bar/170PSI				
160 = 11bar/160PSI						

Piloted, 2-Way Spool Valve, Ported Vent Normally Closed



Cartridge Size	Flow	Line Body				Seals
PD10-44-6T-NS-*	30 lpm / 8 gpm	6T	Alum.	7024460	9/16" UNF	NS = Buna N Spool Seal
PD12-44-10T-N-*	114 lpm / 30 gpm	10T	Alum.	7022480	7/8" UNF	N = Buna N
PD16-44-12T-N-*	170 lpm / 45 gpm	12T	Alum.	7023450	9/16" UNF	N = Buna N
Pressure Range (* Select Pressure Range)						
60 = 4.1bar/60PSI	110 = 7.6bar/110PSI	170 = 11.7bar/170PSI				
110 = 7.6bar/110PSI	170 = 11.7bar/170PSI					
110 = 7.6bar/110PSI	170 = 11.7bar/170PSI					

Piloted, 3-Way Spool Valve, Ported Vent Normally Open



Cartridge Size	Flow	Line Body				Seals
PD10-45-6T-N-*	45 lpm / 12 gpm	6T	Alum.	7024460	9/16" UNF	NS = Buna N
PD12-45-10T-N-*	114 lpm / 30 gpm	10T	Alum.	7022480	7/8" UNF	N = Buna N
PD16-45-12T-N-*	170 lpm / 45 gpm	12T	Alum.	7023450	9/16" UNF	N = Buna N
PD42-M45-16T-N-160	265 lpm / 70 gpm	16T	Alum.	7029540	9/16" UNF	N = Buna N
HPD42-M45-20HT-N-180	265 lpm / 70 gpm	20HT	Duct. Iron	7159120	9/16" UNF	U = Urethane
Pressure Range (* Select Pressure Range)						
60 = 4.1bar/60PSI	110 = 7.6bar/110PSI	170 = 11.7bar/170PSI				
110 = 7.6bar/110PSI	170 = 11.7bar/170PSI					
60 = 4.1bar/60PSI	110 = 7.6bar/110PSI	170 = 11.7bar/170PSI				
160 = 11bar/160PSI						
180 = 12.4bar/180PSI						

HYDRAFORCE CARTRIDGE QUICK REFERENCE

Piloted 4-Way Spool Valve with Vented Spring Chamber		Cartridge Size	Flow	Line Body			Seals	
	PD12-S60N	PD12-S60N-10TD-N-*	56 lpm / 15 gpm	10TD			N = Buna N	
		PD12-S60N-0-N-*	95 lpm / 25 gpm				N = Buna N	
		PD42-S60N-12TD-N-170	189 lpm / 50 gpm	12TD	Duct. Iron	7150450	9/16" UNF	N = Buna N
		PD12-S61N-10TD-N-*	56 lpm / 15 gpm	10TD	Duct. Iron	7150250	7/8" UNF	N = Buna N
		PD16-S61N-0-N-*	150 lpm / 40 gpm					N = Buna N
		HPD42-S61-20HT-U-160	189 lpm / 50 gpm	20HT	Duct. Iron	7158070	9/16" UNF	U = Urethane
		PD10-S62-0-N-*	53 lpm / 14 gpm					N = Buna N
		HPD42-S62-20HT-U-160	189 lpm / 50 gpm	20HT	Duct. Iron	7158070	9/16" UNF	U = Urethane
		PD16-S63-0-N-*	151 lpm / 40 gpm					N = Buna N
		HPD42-S63-20HT-U-170	189 lpm / 50 gpm	20HT	Duct. Iron	7158070	9/16" UNF	U = Urethane
		Pressure Range (* Select Pressure Range)						
	110 = 7.6bar/110PSI	170 = 11.7bar/170PSI						
	60 = 4.1bar/60PSI	80 = 5.5bar/80PSI	110 = 7.6bar/110PSI	170 = 11.7bar/170PSI				
	170 = 11.7bar/170PSI							
	110 = 7.6bar/110PSI	170 = 11.7bar/170PSI						
	60 = 4.1bar/60PSI	110 = 7.6bar/110PSI	170 = 11.7bar/170PSI					
	160 = 11bar/160PSI							
	150 = 10.3bar/150PSI	230 = 15.9bar/230PSI						
	160 = 11bar/160PSI							
	60 = 4.1bar/60PSI	80 = 5.5bar/80PSI	110 = 7.6bar/110PSI	170 = 11.7bar/170PSI				
	170 = 11.7bar/170PSI							

Piloted 4-Way Spool Valve Open Centre		Cartridge Size	Flow	Line Body			Seals
	PD42-S67B-12TD-N-170	189 lpm / 50 gpm	12TD	Duct. Iron	7150450	9/16" UNF	N = Buna N
	Pressure Range (* Select Pressure Range)						
	170 = 11.7bar/170PSI						

Piloted 4-Way Spool Valve Closed Centre		Cartridge Size	Flow	Line Body			Seals	
	PD16-S67C-0-N-*	95 lpm / 25 gpm					N = Buna N	
		HPD16-S67C-16HT-U-*	95 lpm / 25 gpm	16HT	Duct. Iron	7157560	9/16" UNF	U = Urethane
		HPD42-S67C-20HT-U-170	189 lpm / 50 gpm	20HT	Duct. Iron	7158070	9/16" UNF	U = Urethane
	Pressure Range (* Select Pressure Range)							
		110 = 7.6bar/110PSI	170 = 11.7bar/170PSI					
	110 = 7.6bar/110PSI	170 = 11.7bar/170PSI						
	170 = 11.7bar/170PSI							

Piloted 4-Way Spool Valve Motor Spool		Cartridge Size	Flow	Line Body			Seals	
	PD16-S67D-0-N-*	95 lpm / 25 gpm					N = Buna N	
		HPD16-S67D-16HT-U-*	95 lpm / 25 gpm	16HT	Duct. Iron	7157560	9/16" UNF	U = Urethane
		HPD42-S67D-20HT-U-170	189 lpm / 50 gpm	20HT	Duct. Iron	7158070	9/16" UNF	U = Urethane
	Pressure Range (* Select Pressure Range)							
		110 = 7.6bar/110PSI	170 = 11.7bar/170PSI					
	110 = 7.6bar/110PSI	170 = 11.7bar/170PSI						
	170 = 11.7bar/170PSI							