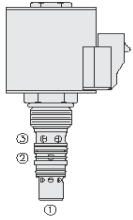
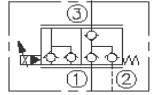


HYDRAFORCE CARTRIDGE QUICK REFERENCE

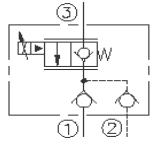
Proportional Directional Control, 3-Port, N.C., with Check-Isolated Load Sense



ISO:

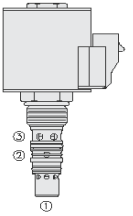


Expanded:

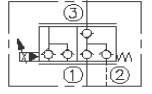


Cartridge Size	Flow	Option (* Select Option)	Line Body			
SPCL10-30*-6T	57 lpm / 15 gpm	J = MAN O/RIDE PUSH PULL	8T	Alum.	7024380	3/4" UNF
SPCL16-30	152 lpm / 40 gpm	M = MANUAL O/RIDE	16T	Alum.	7023340	1-5/16" UNF
		Y = MAN O/RIDE PUSH PULL				
Seals	Voltage (Standard Coils)*	Voltage (E Coils)***	Termination (Standard V)	Termination (Standard AC)	Termination (Standard E Coils)**	
N = Buna N	12 = 12VDC	12 = 12VDC	DS = Dual Spade	AG = Din (6316115/63162)	ER = Deutsch DT04-2P (IP69K) (4303612/4303624)	
	24 = 24VDC	24 = 24VDC	DG = Din (6306012/6306024)		EY = Metric-Pack 150 (IP69K)	
	115 = 115VAC		DL = Leadwires			
	24 = 24VDC	24 = 24VDC	DG = Din (6306012/6306024)		EY = Metric-Pack 150 (IP69K)	
	115 = 115VAC		DL = Leadwires			

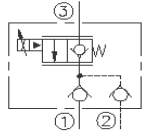
Proportional Directional Control, 3-Port, N.C., with Non-Isolated Load Sense



ISO:



Expanded:



Cartridge Size	Flow	Option (* Select Option)	Line Body			
SPCL10-32*-8T-N-***/**	57 lpm / 15 gpm	J = MAN O/RIDE PUSH PULL	8T	Alum.	7024380	3/4" UNF
SPCL16-32*-16T-N-***/**	152 lpm / 40 gpm	M = MANUAL O/RIDE	16T	Alum.	7023340	1-5/16" UNF
		Y = MAN O/RIDE PUSH PULL				
Seals	Voltage (Standard Coils)*	Voltage (E Coils)***	Termination (Standard V)	Termination (Standard AC)	Termination (Standard E Coils)**	
N = Buna N	12 = 12VDC	12 = 12VDC	DS = Dual Spade	AG = Din (6316115/63162)	ER = Deutsch DT04-2P (IP69K) (4303612/4303624)	
	24 = 24VDC	24 = 24VDC	DG = Din (6306012/6306024)		EY = Metric-Pack 150 (IP69K)	
	115 = 115VAC		DL = Leadwires			
	24 = 24VDC	24 = 24VDC	DG = Din (6306012/6306024)		EY = Metric-Pack 150 (IP69K)	
	115 = 115VAC		DL = Leadwires			