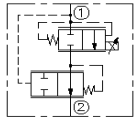
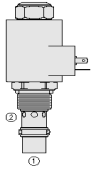


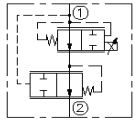
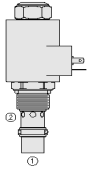
## HYDRAFORCE CARTRIDGE QUICK REFERENCE

### Proportional Flow Control, Restrictive, Normally Closed



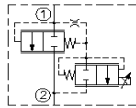
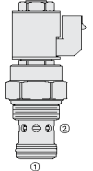
Cartridge Size	Flow	Option (* Select Option)	Line Body			
PV72-20*-12T-N-***/**	64 lpm / 17 gpm	M = MANUAL O/RIDE	12T	Alum.	7022250	1-1/16" UNF
*HPV12-20*-12TD-U-***/**	68 lpm / 18 gpm		12TD	Duct. Iron	7155010	1-1/16" UNF
<b>Seals</b>	<b>12 = 12VDC</b>	<b>12 = 12VDC</b>	<b>DS = Dual Spade</b>	<b>AG = Din (6316115/63162)</b>	<b>ER = Deutsch DT04-2P (IP69K) (4303612/4303624)</b>	
N = Buna N	<b>24 = 24VDC</b>	<b>24 = 24VDC</b>	<b>DG = Din (6306012/6306024)</b>	<b>EY = Metric-Pack 150 (IP69K)</b>		
U = URATHANE	115 = 115VAC		DL = Leadwires			
	24 = 24VDC	24 = 24VDC	DG = Din ( <b>6306012/6306024</b> )	EY = Metric-Pack 150 (IP69K)		
* Rated for 345 bar / 5000	115 = 115VAC		DL = Leadwires			

### Proportional Flow Control, Restrictive, Normally Open



Cartridge Size	Flow	Option (* Select Option)	Line Body			
PV72-21*-12T-N-***/**	64 lpm / 17 gpm	M = MANUAL O/RIDE	12T	Alum.	7022250	1-1/16" UNF
*HPV12-21*-12TD-U-***/**	68 lpm / 18 gpm		12TD	Duct. Iron	7155010	1-1/16" UNF
<b>Seals</b>	<b>12 = 12VDC</b>	<b>12 = 12VDC</b>	<b>DS = Dual Spade</b>	<b>AG = Din (6316115/63162)</b>	<b>ER = Deutsch DT04-2P (IP69K) (4303612/4303624)</b>	
N = Buna N	<b>24 = 24VDC</b>	<b>24 = 24VDC</b>	<b>DG = Din (6306012/6306024)</b>	<b>EY = Metric-Pack 150 (IP69K)</b>		
U = URATHANE	115 = 115VAC		DL = Leadwires			
	24 = 24VDC	24 = 24VDC	DG = Din ( <b>6306012/6306024</b> )	EY = Metric-Pack 150 (IP69K)		
* Rated for 345 bar / 5000	115 = 115VAC		DL = Leadwires			

### Proportional Flow Control, Normally Closed



Cartridge Size	Flow	Option (* Select Option)	Line Body			
PV16-23*-16T-N-***/**	170 lpm / 45 gpm	M = MANUAL O/RIDE	16T	Alum.	7023240	1-5/16" UNF
<b>Seals</b>	<b>12 = 12VDC</b>	<b>12 = 12VDC</b>	<b>DS = Dual Spade</b>	<b>AG = Din (6316115/63162)</b>	<b>ER = Deutsch DT04-2P (IP69K) (4303612/4303624)</b>	
N = Buna N	24 = 24VDC	24 = 24VDC	DG = Din ( <b>6306012/6306024</b> )	EY = Metric-Pack 150 (IP69K)		
	115 = 115VAC		DL = Leadwires			
	24 = 24VDC	24 = 24VDC	DG = Din ( <b>6306012/6306024</b> )	EY = Metric-Pack 150 (IP69K)		
	115 = 115VAC		DL = Leadwires			