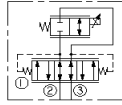
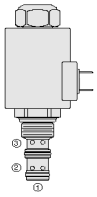


HYDRAFORCE CARTRIDGE QUICK REFERENCE

Proportional Flow Control, Bi-Directional, Normally Closed

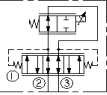
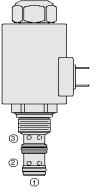


ABBREVIATED:



Cartridge Size	Flow	Option (* Select Option)	Line Body			
ZL70-30*-8T-N-***/**	19 lpm / 5 gpm	M = MANUAL O/RIDE	8T	Alum.	7026520	3/4" UNF
ZL72-30*-12T-***/**	50 lpm / 13 gpm		12T	Alum.	7022340	1-1/16" UNF
Seals	12 = 12VDC	12 = 12VDC	DS = Dual Spade	AG = Din (6316115/63162) ER = Deutsch DT04-2P (IP69K) (4303612/4303624)		
N = Buna N	24 = 24VDC	24 = 24VDC	DG = Din (6306012/6306024)	EY = Metric-Pack 150 (IP69K)		
	115 = 115VAC		DL = Leadwires			
U = URATHANE	24 = 24VDC	24 = 24VDC	DG = Din (6306012/6306024)	EY = Metric-Pack 150 (IP69K)		
	115 = 115VAC		DL = Leadwires			

Proportional Flow Control, Bi-Directional, Normally Open



ABBREVIATED:



Cartridge Size	Flow	Option (* Select Option)	Line Body			
ZL70-31*-8T-N-***/**	19 lpm / 5 gpm	M = MANUAL O/RIDE	8T	Alum.	7026520	3/4" UNF
ZL72-31*-12T-***/**	50 lpm / 13 gpm		12T	Alum.	7022340	1-1/16" UNF
Seals	12 = 12VDC	12 = 12VDC	DS = Dual Spade	AG = Din (6316115/63162) ER = Deutsch DT04-2P (IP69K) (4303612/4303624)		
N = Buna N	24 = 24VDC	24 = 24VDC	DG = Din (6306012/6306024)	EY = Metric-Pack 150 (IP69K)		
	115 = 115VAC		DL = Leadwires			
U = URATHANE	24 = 24VDC	24 = 24VDC	DG = Din (6306012/6306024)	EY = Metric-Pack 150 (IP69K)		
	115 = 115VAC		DL = Leadwires			