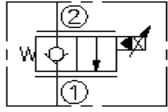
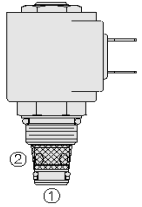


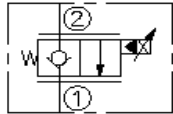
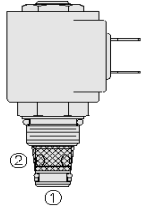
HYDRAFORCE CARTRIDGE QUICK REFERENCE

Proportional Flow Control, 2-Way, Normally Closed



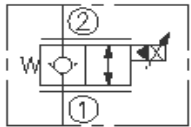
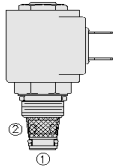
Cartridge Size	Flow	Option (* Select Option)	Line Body			
SP08-20*-6T-N-***/**	22 lpm / 5.8 gpm	J = MAN O/RIDE PUSH PUL	6T	Alum.	7024760	9/16" UNF
SP08-20A*-6T-N-***/**	30 lpm / 8 gpm	M = MANUAL O/RIDE	6T	Alum.	7024760	9/16" UNF
SP10-20*-8T-N-***/**	68 lpm / 18 gpm	T = MAN O/RIDE 3 POSITIC	8T	Alum.	7024280	3/4" UNF
HSP10-20-6TD-U-***/**	53 lpm / 14 gpm	Y = MAN O/RIDE PUSH PU	6TD	Duct. Iron	7151500	9/16" UNF
SP12-20*-10T-N-***/**	100 lpm / 27 gpm		10T	Alum.	7022240	7/8" UNF
SP16-20*-12T-N-***/**	265 lpm / 70 gpm		12T	Alum.	7023230	1-1/16" UNF
HSP16-20-BHB-U-***/**	265 lpm / 70 gpm		16TD	Duct. Iron	7152020	1-5/16" UNF
* Rated for 345 bar / 5000 psi						
Seals	Voltage (Standard Coils)**	Voltage (E Coils)***	Termination (Standard VD)	Termination (Standard AC)	Termination (Standard E Coils)**	
N = Buna N	12 = 12VDC	12 = 12VDC	DS = Dual Spade	AG = Din (6316115/63162)	ER = Deutsch DT04-2P (IP69K) (4303612/4303624)	
U = URATHANE	24 = 24VDC	24 = 24VDC	DG = Din (6306012/6306024)		EY = Metric-Pack 150 (IP69K)	
	115 = 115VAC		DL = Leadwires			
	24 = 24VDC	24 = 24VDC	DG = Din (6306012/6306024)		EY = Metric-Pack 150 (IP69K)	
	115 = 115VAC		DL = Leadwires			

Proportional Flow Control, 2-Way, Normally Open



Cartridge Size	Flow	Option (* Select Option)	Line Body			
SP08-21*-6T-N-***/**	22 lpm / 5.8 gpm	J = MAN O/RIDE PUSH PUL	6T	Alum.	7024760	9/16" UNF
SP10-21*8T-N-***/**	60 lpm / 16 gpm	M = MANUAL O/RIDE	8T	Alum.	7024280	3/4" UNF
HSP10-21-6TD-U-***/**	53 lpm / 14 gpm	T = MAN O/RIDE 3 POSITIC	6TD	Duct. Iron	7151500	9/16" UNF
SP12-21*-10T-N-***/**	200 lpm / 53 gpm	Y = MAN O/RIDE PUSH PU	10T	Alum.	7022240	7/8" UNF
SP16-21*-12T-U-***/**	265 lpm / 70 gpm		12T	Alum.	7023230	1-1/16" UNF
HSP16-21-16TD-U-***/**	76 lpm / 20 gpm		16TD	Duct. Iron	7152020	1-5/16" UNF
* Rated for 345 bar / 5000 psi						
Seals	Voltage (Standard Coils)**	Voltage (E Coils)***	Termination (Standard VD)	Termination (Standard AC)	Termination (Standard E Coils)**	
N = Buna N	12 = 12VDC	12 = 12VDC	DS = Dual Spade	AG = Din (6316115/63162)	ER = Deutsch DT04-2P (IP69K) (4303612/4303624)	
U = URATHANE	24 = 24VDC	24 = 24VDC	DG = Din (6306012/6306024)		EY = Metric-Pack 150 (IP69K)	
	115 = 115VAC		DL = Leadwires			
	24 = 24VDC	24 = 24VDC	DG = Din (6306012/6306024)		EY = Metric-Pack 150 (IP69K)	

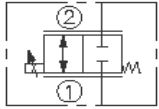
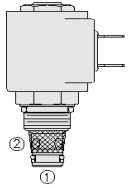
Proportional Flow Control, 2-Way, Normally Closed, Bi-Directional



Cartridge Size	Flow	Option (* Select Option)	Line Body			
SP08-22-N-***/**	30 lpm / 8 gpm		6T	Alum.	7024760	9/16" UNF
Seals	Voltage (Standard Coils)**	Voltage (E Coils)***	Termination (Standard VD)	Termination (Standard AC)	Termination (Standard E Coils)**	
N = Buna N	12 = 12VDC	12 = 12VDC	DS = Dual Spade	AG = Din (6316115/63162)	ER = Deutsch DT04-2P (IP69K) (4303612/4303624)	
	24 = 24VDC	24 = 24VDC	DG = Din (6306012/6306024)		EY = Metric-Pack 150 (IP69K)	
	115 = 115VAC		DL = Leadwires			
	24 = 24VDC	24 = 24VDC	DG = Din (6306012/6306024)		EY = Metric-Pack 150 (IP69K)	
	115 = 115VAC		DL = Leadwires			

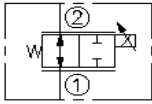
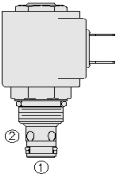
HYDRAFORCE CARTRIDGE QUICK REFERENCE

Proportional Flow Control, 2-Way, Normally Closed, Metering



Cartridge Size	Flow	Option (* Select Option)	Line Body			
SP08-24-6T-N-***/**	22.7 lpm / 6 gpm		6T	Alum.	7024760	9/16" UNF
SP10-24-8T-N-***/**	26.5 lpm / 7 gpm		8T	Alum.	7024280	3/4" UNF
Seals	Voltage (Standard Coils)*	Voltage (E Coils)**	Termination (Standard V)	Termination (Standard AC)	Termination (Standard E Coils)**	
N = Buna N	12 = 12VDC	12 = 12VDC	DS = Dual Spade	AG = Din (6316115/63162)	ER = Deutsch DT04-2P (IP69K) (4303612/4303624)	
	24 = 24VDC	24 = 24VDC	DG = Din (6306012/6306024)		EY = Metric-Pack 150 (IP69K)	
	115 = 115VAC		DL = Leadwires			
	24 = 24VDC	24 = 24VDC	DG = Din (6306012/6306024)		EY = Metric-Pack 150 (IP69K)	
	115 = 115VAC		DL = Leadwires			

Proportional Flow Control, 2-Way, Normally Open, Bi-Directional



Cartridge Size	Flow	Option (* Select Option)	Line Body			
SP08-25-6T-N-***/**	15 lpm / 4 gpm		6T	Alum.	7024760	9/16" UNF
SP10-25-8T-N-***/**	18.9 lpm / 5 gpm		8T	Alum.	7024280	3/4" UNF
Seals	Voltage (Standard Coils)*	Voltage (E Coils)**	Termination (Standard V)	Termination (Standard AC)	Termination (Standard E Coils)**	
N = Buna N	12 = 12VDC	12 = 12VDC	DS = Dual Spade	AG = Din (6316115/63162)	ER = Deutsch DT04-2P (IP69K) (4303612/4303624)	
	24 = 24VDC	24 = 24VDC	DG = Din (6306012/6306024)		EY = Metric-Pack 150 (IP69K)	
	115 = 115VAC		DL = Leadwires			
	24 = 24VDC	24 = 24VDC	DG = Din (6306012/6306024)		EY = Metric-Pack 150 (IP69K)	
	115 = 115VAC		DL = Leadwires			