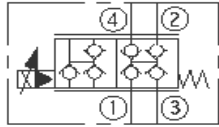
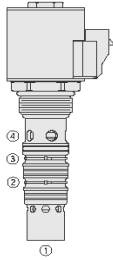


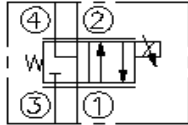
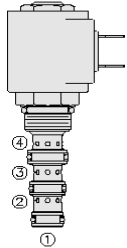
HYDRAFORCE CARTRIDGE QUICK REFERENCE

Proportional Directional Control, 4-Port, N.C., with Non-Isolated Load Sense



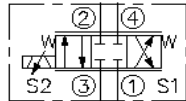
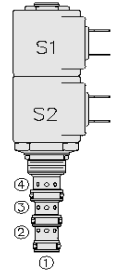
Cartridge Size	Flow	Option (* Select Option)	Line Body			
SPCL16-40-16T-N-***/**	152 lpm / 40 gpm		16T*	Alum.	7023470	9/16" UNF
Seals	Voltage (Standard Coils)*	Voltage (E Coils)***	Termination (Standard V)	Termination (Standard AC)	Termination (Standard E Coils)**	
N = Buna N	12 = 12VDC	12 = 12VDC	DS = Dual Spade	AG = Din (6316115/63162)	ER = Deutsch DT04-2P (IP69K) (4303612/4303624)	
	24 = 24VDC	24 = 24VDC	DG = Din (6306012/6306024)		EY = Metric-Pack 150 (IP69K)	
	115 = 115VAC		DL = Leadwires			
	24 = 24VDC	24 = 24VDC	DG = Din (6306012/6306024)		EY = Metric-Pack 150 (IP69K)	
	115 = 115VAC		DL = Leadwires			

Proportional Directional Control, 4-Way, 2-Position, Normally Closed



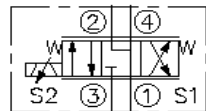
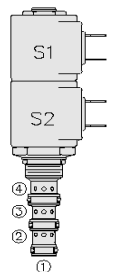
Cartridge Size	Flow	Option (* Select Option)	Line Body			
SP08-46R-6T-N-***/**	11 lpm / 3 gpm		6T	Alum.	7024860	9/16" UNF
SP10-46R-8T-N-***/**	23 lpm / 6 gpm		8T	Alum.	7024480	3/4" UNF
Seals	Voltage (Standard Coils)*	Voltage (E Coils)***	Termination (Standard V)	Termination (Standard AC)	Termination (Standard E Coils)**	
N = Buna N	12 = 12VDC	12 = 12VDC	DS = Dual Spade	AG = Din (6316115/63162)	ER = Deutsch DT04-2P (IP69K) (4303612/4303624)	
	24 = 24VDC	24 = 24VDC	DG = Din (6306012/6306024)		EY = Metric-Pack 150 (IP69K)	
	115 = 115VAC		DL = Leadwires			
	24 = 24VDC	24 = 24VDC	DG = Din (6306012/6306024)		EY = Metric-Pack 150 (IP69K)	
	115 = 115VAC		DL = Leadwires			

Proportional Directional Control, 4-Way, 3-Position, Closed Center



Cartridge Size	Flow	Option (* Select Option)	Line Body			
SP08-47C*-6T-N-***/**	11 lpm / 3 gpm	M = MANUAL O/RIDE	6T	Alum.	7024860	9/16" UNF
SP08-47CL*-6T-N-***/**	7.6 lpm / 2 gpm		6T	Alum.	7024860	9/16" UNF
SP10-47C*-8T-N-***/**	22 lpm / 6 gpm		8T	Alum.	7024480	3/4" UNF
HSP10-47C-8TD-U-***/	33 lpm / 8 gpm		8TD	Duct. Iron	7151710	3/4" UNF
* Rated for 345 bar / 5000 psi						
Seals	Voltage (Standard Coils)*	Voltage (E Coils)***	Termination (Standard V)	Termination (Standard AC)	Termination (Standard E Coils)**	
N = Buna N	12 = 12VDC	12 = 12VDC	DS = Dual Spade	AG = Din (6316115/63162)	ER = Deutsch DT04-2P (IP69K) (4303612/4303624)	
U = URATHANE	24 = 24VDC	24 = 24VDC	DG = Din (6306012/6306024)		EY = Metric-Pack 150 (IP69K)	
	115 = 115VAC		DL = Leadwires			
	24 = 24VDC	24 = 24VDC	DG = Din (6306012/6306024)		EY = Metric-Pack 150 (IP69K)	
	115 = 115VAC		DL = Leadwires			

Proportional Directional Control, 4-Way, 3-Position, Motor Spool



Cartridge Size	Flow	Option (* Select Option)	Line Body			
SP08-47D*-6T-N-***/**	11 lpm / 3 gpm	M = MANUAL O/RIDE	6T	Alum.	7024860	9/16" UNF
SP08-47DL*-6T-N-***/**	7.6 lpm / 2 gpm		6T	Alum.	7024860	9/16" UNF
SP10-47D*-8T-N-***/**	22 lpm / 6 gpm		8T	Alum.	7024480	3/4" UNF
HSP10-47D-8TD-U-***/	35 lpm / 9 gpm		8TD	Duct. Iron	7151710	3/4" UNF
* Rated for 345 bar / 5000 psi						
Seals	Voltage (Standard Coils)*	Voltage (E Coils)***	Termination (Standard V)	Termination (Standard AC)	Termination (Standard E Coils)**	
N = Buna N	12 = 12VDC	12 = 12VDC	DS = Dual Spade	AG = Din (6316115/63162)	ER = Deutsch DT04-2P (IP69K) (4303612/4303624)	
U = URATHANE	24 = 24VDC	24 = 24VDC	DG = Din (6306012/6306024)		EY = Metric-Pack 150 (IP69K)	
	115 = 115VAC		DL = Leadwires			
	24 = 24VDC	24 = 24VDC	DG = Din (6306012/6306024)		EY = Metric-Pack 150 (IP69K)	
	115 = 115VAC		DL = Leadwires			