

HYDRAFORCE CARTRIDGE QUICK REFERENCE

Check, Guided	Cartridge Size	Flow	Line Body				Seals	
	CV04-20-0-N-5	5 lpm / 1.5 gpm	N/A				N = Buna N	
	CV04-B20-0-N-5	5 lpm / 1.5 gpm	N/A				N = Buna N	
	HCV06-20-4T-U-5	19 lpm / 5 gpm	4T	Alum.	7029000	7/16" UNF	U = Urethane	
	CV08-20-6T-N-*	30 lpm / 8 gpm	6T	Alum.	7024660	9/16" UNF	N = Buna N	
	HCV08-20-6TD-U-*	30 lpm / 8 gpm	6TD	Duct. Iron	7151010	9/16" UNF	U = Urethane	
	CV10-20-8T-N-*	76 lpm / 20 gpm	8T	Alum.	7024280	3/4" UNF	N = Buna N	
	CV50-20-8TD-P-*	57 lpm / 15 gpm	8TD	Duct. Iron	7151410	3/4" UNF	P = Polyurethane	
	CV12-20-10T-N-*	95 lpm / 25 gpm	10T	Alum.	7022240	7/8" UNF	N = Buna N	
	HCV12-20-16HT-U-*	95 lpm / 25 gpm	16HT	Duct. Iron	7158420	1-5/16" UNF	U = Urethane	
	CV16-20-12T-N-*	151 lpm / 40 gpm	12T	Alum.	7023230	1-1/16" UNF	N = Buna N	
	HCV16-20-16HT-U-*	151 lpm / 40 gpm	16HT	Duct. Iron	7157220	1-5/16" UNF	U = Urethane	
	CV42-M20-20T-N-*	378 lpm / 100 gpm	20T	Alum.	7022580	1-5/8" UNF	N = Buna N	
	HCV42-M20-20HT-U-*	302 lpm / 80 gpm	20HT	Duct. Iron	7157310	1-5/8" UNF	U = Urethane	
	Pressure Range (* Select Pressure Range)							
	5 = 0.3bar/5PSI							
5 = 0.3bar/5PSI								
5 = 0.3bar/5PSI								
4 = 0.3bar/4PSI								
10 = 0.7bar/10PSI	25 = 1.7bar/25PSI	40 = 2.8bar/40PSI	60 = 4.1bar/60PSI	100 = 6.9bar/100PSI	150 = 10.3bar/150PSI			
3 = 0.2bar/3PSI	7 = 0.5bar/7psi	10 = 0.7bar/10PSI	20 = 1.4 bar/20PSI	30 = 2.1bar/30PSI	45 = 3.1bar/45PSI	60 = 4.1bar/60PSI		
2 = 0.14bar/2PSI	5 = 0.3bar/5PSI	15 = 1bar/15PSI	30 = 2.1bar/30PSI	40 = 2.8bar/40PSI	70 = 4.8bar/70PSI	100 = 6.9bar/100PSI		
5 = 0.3bar/5PSI	15 = 1bar/15PSI	30 = 2.1bar/30PSI	70 = 4.8bar/70PSI	100 = 6.9bar/100PSI	300 = 20.4bar/300PSI			
5 = 0.3bar/5PSI	25 = 1.7bar/25PSI	30 = 2.1bar/30PSI	40 = 2.8bar/40PSI	50 = 3.4bar/50PSI	60 = 4.1bar/60PSI	80 = 5.5bar/80PSI		
5 = 0.3bar/5PSI	25 = 1.7bar/25PSI	30 = 2.1bar/30PSI	40 = 2.8bar/40PSI	50 = 3.4bar/50PSI	60 = 4.1bar/60PSI	80 = 5.5bar/80PSI		
5 = 0.3bar/5PSI	25 = 1.7bar/25PSI	60 = 4.1bar/60PSI	80 = 5.5bar/80PSI	100 = 6.9bar/100PSI	150 = 10.3bar/150PSI			
5 = 0.3bar/5PSI	8 = 0.6bar/8PSI	15 = 1bar/15PSI	25 = 1.7bar/25PSI	45 = 3.5bar/45PSI	60 = 4.1bar/60PSI			
5 = 0.3bar/5PSI	15 = 1bar/15PSI	30 = 2.1bar/30PSI	45 = 3.5bar/45PSI	60 = 4.1bar/60PSI	100 = 6.9bar/100PSI			
5 = 0.3bar/5PSI	15 = 1bar/15PSI	30 = 2.1bar/30PSI	60 = 4.1bar/60PSI	100 = 6.9bar/100PSI				

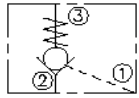
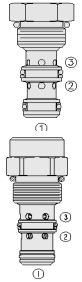
Check, Guided, Reverse Flow Direction	Cartridge Size	Flow	Line Body				Seals
	CV08-21-6T-N-30	30 lpm / 8 gpm	6T	Alum.	7024660	9/16" UNF	N = Buna N
	CV12-21-10T-N-*	114 lpm / 30 gpm	10T	Alum.	7022240	7/8" UNF	N = Buna N
	CV10-23-8T-N-*	49 lpm / 13 gpm	8T	Alum.	7024280	3/4" UNF	N = Buna N
	CV10-24-8T-N-*	56 lpm / 15 gpm	8T	Alum.	7024280	3/4" UNF	N = Buna N
	Pressure Range (* Select Pressure Range)						
30 = 2.1bar/30PSI							
6 = 0.4bar/6PSI	26 = 1.8bar/26PSI	56 = 3.8bar/56PSI					
5 = 0.3bar/5PSI	25 = 1.7bar/25PSI	55 = 3.8bar/55PSI					
5 = 0.3bar/5PSI	25 = 1.7bar/25PSI	55 = 3.8bar/55PSI					

Check, Guided with Thermal Relief	Cartridge Size	Flow	Line Body				Seals	
	CV10-28-8T-N-*/**	45 lpm / 12 gpm	8T	Alum.	7024280	3/4" UNF	N = Buna N	
	Pressure Range (* Select Pressure Range)							
	65 = 4.5bar/65PSI							
	Thermal Relief Settings (** Select Pressure Range)							
05 = 500-700PSI	10 = 1000-1350PSI	20 = 2000-2500PSI	25 = 2500-3150PSI	30 = 3000-3800PSI	40 = 4000-5000PSI	45 = 4500-5600PSI		

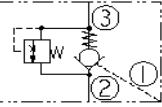
Check, Guided with Integral Fitting	Cartridge Size	Flow	Line Body				Seals
	HCV16-30-U-04	151 lpm / 40 gpm	16HT	Duct. Iron	7157220	1-5/16" UNF	U = Urethane
	Pressure Range (* Select Pressure Range)						
04 = 10.3bar/4PSI							

HYDRAFORCE CARTRIDGE QUICK REFERENCE

Check Valve, Pilot-to-Open



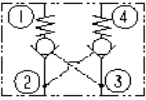
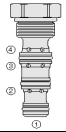
PC08-30/PC10-30/PC10-32/HPC08-30



PC10-38

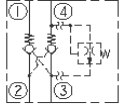
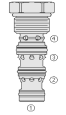
Cartridge Size	Flow	Line Body				Seals
PC08-30-6T-N-*	18 lpm / 5 gpm	6T	Alum.	7024760	9/16" UNF	N = Buna N
HPC08-30-6HT-N-*	30 lpm / 8 gpm	6HT	Duct. Iron	7160110	9/16" UNF	N = Buna N
PC10-30-6T-N-*	22 lpm / 6 gpm	6T	Alum.	7024760	9/16" UNF	N = Buna N
PC10-32-8T-N-*	30 lpm / 8 gpm	8T	Alum.	7024380	3/4" UNF	N = Buna N
PC10-38-8T-N-***	45 lpm / 12 gpm	8T	Alum.	7024380	3/4" UNF	N = Buna N
Pressure Range (* Select Pressure Range)						
Blank = 1.72bar/25PSI	70 = 4.8bar/70PSI	90 = 6.2bar/90PSI	120 = 8.2bar/120PSI	270 = 18.3bar/270PSI		
04 = 10.3bar/4PSI	10 = 0.7bar/10PSI	20 = 1.4bar/20PSI	30 = 2.1bar/30PSI	50 = 3.4bar/50PSI	80 = 5.5bar/80PSI	100 = 6.9bar/100PSI
Blank = 2.1bar/30PSI	70 = 4.8bar/70PSI	90 = 6.2bar/90PSI	120 = 8.2bar/120PSI	270 = 18.3bar/270PSI		
30 = 2.1bar/30PSI	100 = 6.9bar/100PSI					
100 = 6.9bar/100PSI						
Thermal Relief Settings (** Select Pressure Range)						
05 = 500-700PSI	11 = 1000-1350PSI	20 = 2000-2500PSI	25 = 2500-3150PSI	30 = 3000-3800PSI	40 = 4000-5000PSI	45 = 4500-5600PSI

Check, Dual Pilot-to-Open



Cartridge Size	Flow	Line Body				Seals
DC08-40-6T-N-*	18 lpm / 5 gpm	6T	Alum.	7024860	9/16" UNF	N = Buna N
Pressure Range (* Select Pressure Range)						
25 = 1.7bar/25PSI	85 = 5.9bar/85PSI	135 = 9.3bar/135PSI				

Check Valve, Dual Pilot-to-Open/Optional Thermal Relief



Cartridge Size	Flow	Line Body				Seals
DC10-40**-6T-N-*	30 lpm / 8 gpm	6T	Alum.	7024460	9/16" UNF	N = Buna N
Pressure Range (* Select Pressure Range)						
25 = 1.7bar/25PSI						
Thermal Relief Settings (** Select Pressure Range)						
T = 4500-5600PSI						