

Description

In Line, direct acting, solenoid operated hoist check valve, for use in block or load holding.

Operation

To raise pressure flows from port 1 to port 2
To lower flow goes from port 2 to port 1.

Features

Hardened seats for long life and low leakage and low pressure drop.
Manual override.

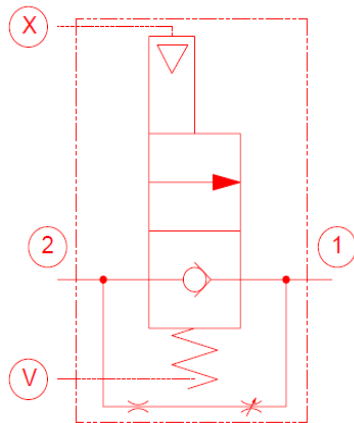
Sizes

Comes in two sizes, 57 l/min & 115 l/min

57 l/min with 1/2" BSPP Ports

115 l/min with 3/4" BSPP Ports

12 or 24 volt Deutsch Coils



Part No	Flow l/min	Voltage	List Price
690052	57	24	\$245.00
690053	115	24	\$306.00
690106	115	12	\$306.00
690107	57	12	\$245.00