

New Development OP11 Upgraded to 75 l/min with 3/8" -un or 1/2" BSPP

OP11 Monoblock Valve

Part No.	No of Spools	Nom Flow l/min	Max Pressure P,A,B	Max Pressure T	Ports (BSPP)	List Price
0111*	1	75	315 bar	25bar	1/2" P,A&B T- 3/4"	\$305
0112*	2					\$468
0113*	3	60				\$622
0104*	4	55				\$767



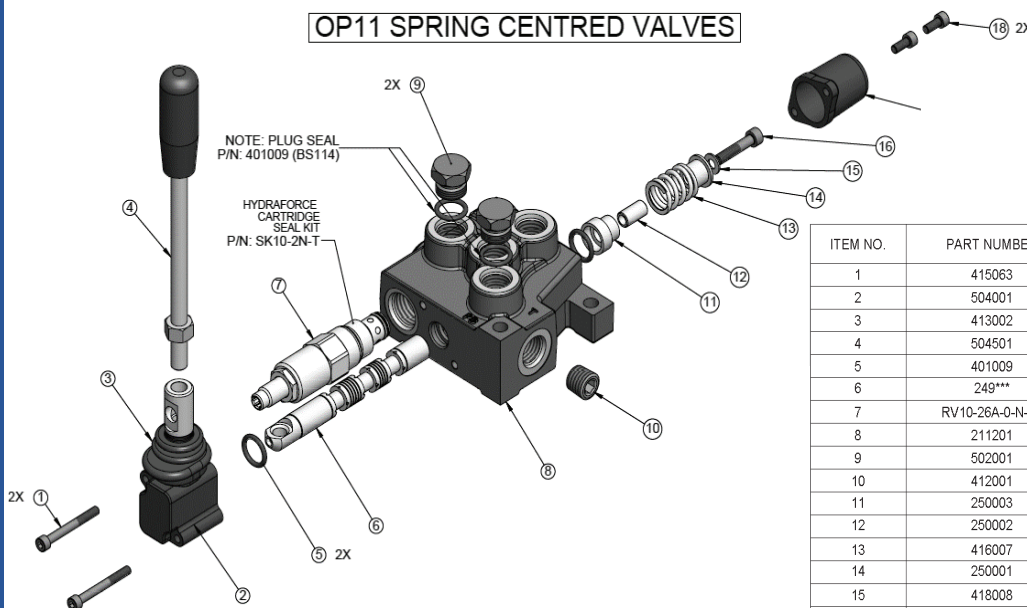
The OP11 Directional Valve provides a compact range of manually operated directional valves for medium flow applications. Like all Oilpath DCV's the handle assembly is fully enclosed to reduce the likelihood of corrosion affecting the handle mechanism. The handle bracket and spring end cover are made from glass filled nylon that has better impact and wear properties than aluminium. Each valve is supplied with a 3/8" bspt plug that can be easily inserted into a pre-tapped gallery to create Power Beyond (H.P.C.) and closed centre facility.

OPTIONS

- 2 and 3 position detent & spring centred detent
- Pneumatic spool actuation
- Closed circuit & power beyond
- Electric limit switch

**Note 4 spool valves remain as OP10 designation*

OP11 SPRING CENTRED VALVES



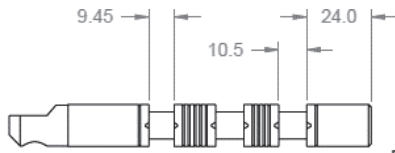
ITEM NO.	PART NUMBER	DESCRIPTION	SPRG CNTRD/QTY
1	415063	M5 x 45 SHCS	2
2	504001	OP10 LEVER BOX ASSEMBLY	1
3	413002	OP10 Lever Box Boot	1
4	504501	OP10 LEVER STEM ASSEMBLY	1
5	401009	N7 114 NITRILE O RING	2
6	249***	OP10 * Spool	1
7	RV10-26A-0-N-30	HYDRAFORCE CARTRIDGE	1
8	211201	OP11 01 3/4" UNF FIN. MACHINED	1
9	502001	3/4" UNF PLUG ASSEMBLY	2
10	412001	3/8" BSPT PRESSURE PLUG	1
11	250003	OP10 Long Spring Cup	1
12	250002	OP10 Spring Centering Bush	1
13	416007	OP S/C SPRING STD	1
14	250001	OP10 Short Spring Cup	1
15	418008	1/4" x 1/2" ZP Washer	1
16	415004	M6 x 30 SHCS	1
17	340001	OP10 Spring Cap	1
18	415005	M5 x 12 SHCS	2

OP11

Monoblock Directional Control Valve

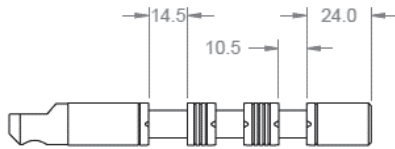
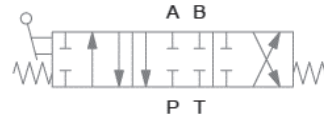


New Development OP11 Upgraded to 75 l/min with $\frac{3}{8}$ "-un or $\frac{1}{2}$ " BSPP



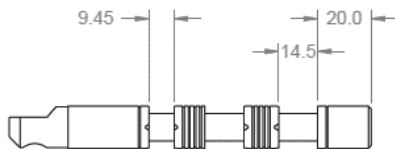
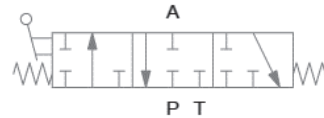
D Spool

PART NO: 249002



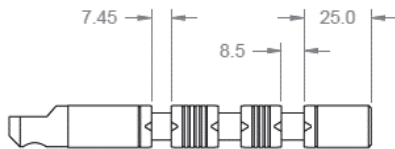
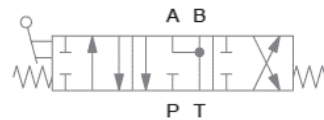
S Spool

PART NO: 249003



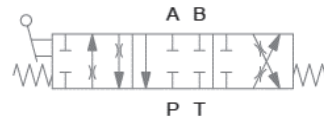
M Spool

PART NO: 249004

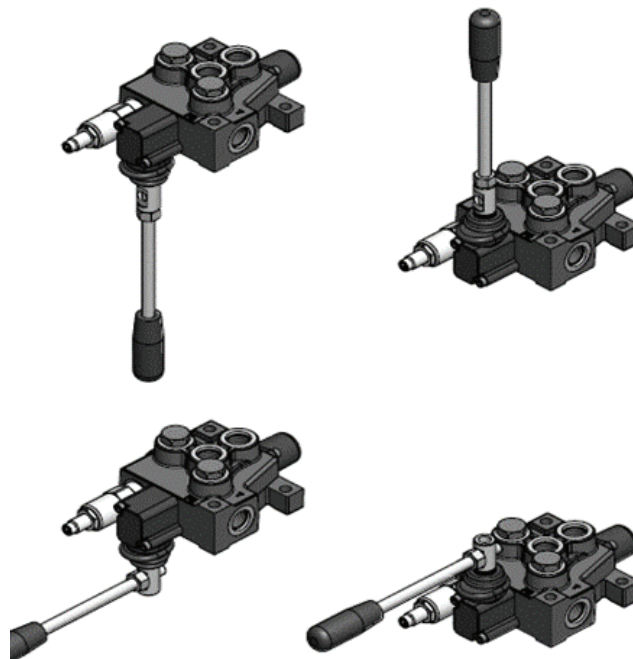


Q Spool

PART NO: 249017



NOTE: ALTERNATE HANDLE ORIENTATION FOR OP11 VALVE

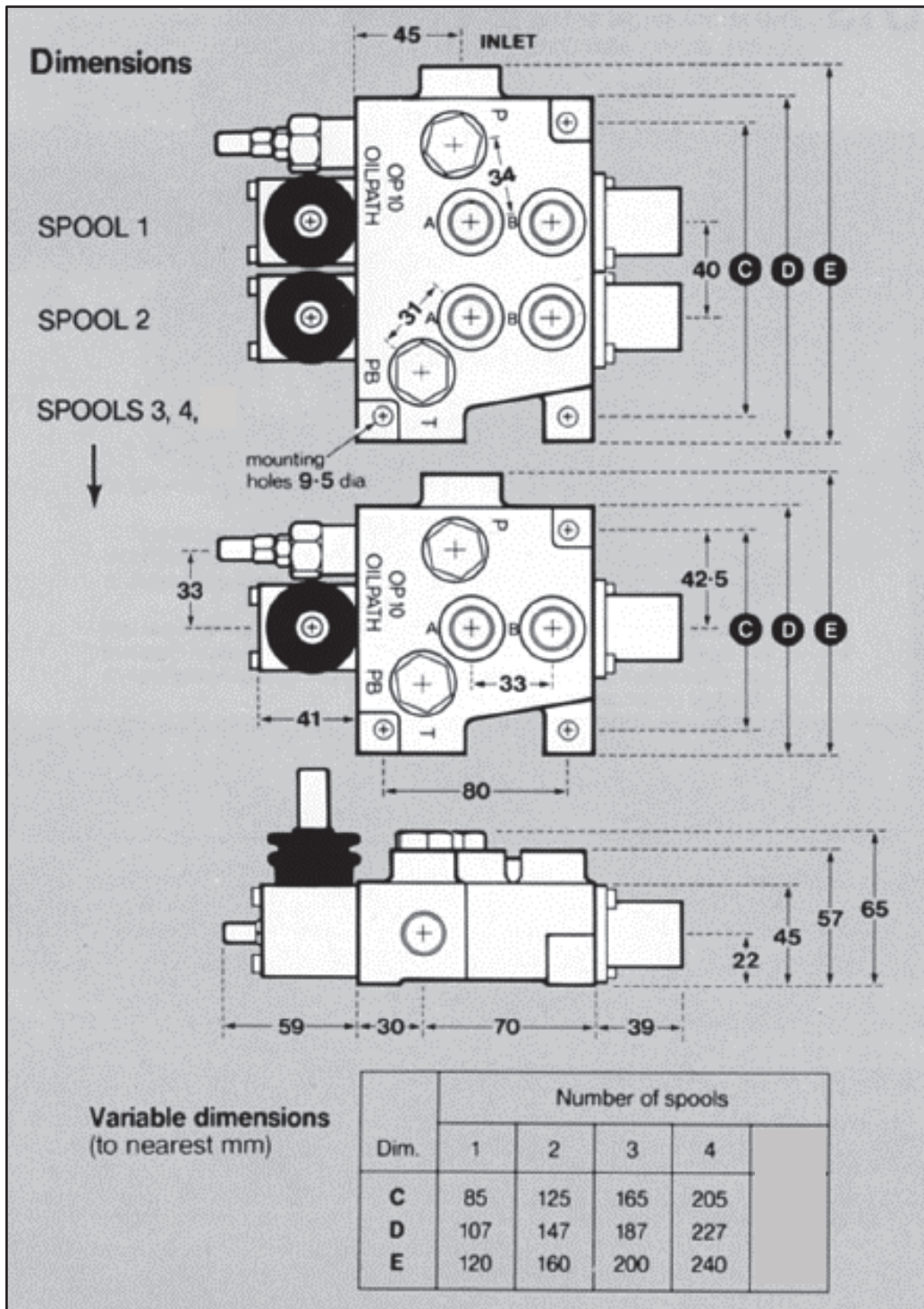


OP11

Monoblock Directional Control Valve



New Development OP11 Upgraded to 75 l/min with 3/8"-un or 1/2" BSPP



New Development OP11 Upgraded to 75 l/min with 3/8"-un or 1/2" BSPP

ORDERING INFORMATION

OP11 (OP10) valves can be ordered by quoting a number/letter group sequence as follows:
Valve series; Spool configuration; Relief setting; Options required

Valve Model	Spool Types		Relief Setting	Options	
OP11	D	Double Acting	Specify Relief Valve Pressure Setting 100 - 5000 psi HydraForce Relief Valves on OP11	PB	High pressure carry over. Plug supplied in package as standard
	Q	Double Acting low flow version		CC	Closed Centre
	S	Single Acting		NR	Relief valve not required
	M	Motor Spool		SCDA	Spring centred dented to port A
OP10 (4 spool only)			No Setting required with NR option 400 - 5000 psi Oilpath Relief valves on OP10-4	SCDB	Spring centred dented to port B
				A	Air Control (OP118) supplied only with manual override
				D	Three position detent
				E	Electric limit switch followed by numeral indicating spools

OP11	D	2000	PB	Single Double acting spool 2000psi relief high pressure carry over
OP11	DS	2500	D2	Double 1 st spool double acting spring centred 2 nd spool single acting detented
OP11	DDD	1500	D1A23	Triple all double acting spools 1500 psi relief detent on 1 st spool pneumatically operated 2 nd & 3 rd spools
OP10	DDDM	3500	SCDB23	OP10 four spool with double acting spools on 1,2,3, motor spool on 4 3500 psi relief spring centred to B on 2 nd & 3 rd spool