

2018



Counterbalance Cartridges



DIRECTIONAL CONTROL VALVES, MANIFOLDS, HYDRAFORCE  
& VALVOLE CARTRIDGE VALVE, AND VALVE PACKAGES

[www.oilpathhydraulics.com](http://www.oilpathhydraulics.com)



OILPATH HYDRAULICS PTY LTD 21 DELORAINE ROAD EDWARDSTOWN SA 5039  
TEL: 08 82774933 FAX: 08 82779126 [sales@oilpathhydraulics.com.au](mailto:sales@oilpathhydraulics.com.au)

P  
R  
I  
C  
E  
  
L  
I  
S  
T



### **Disclaimer**

By using this Price List you acknowledge that you have read, understand and agree to be bound by the following terms and conditions

This Price List catalogue is provided by Oilpath Hydraulics Pty Ltd to give general product information only. It is the responsibility of the user to have the technical expertise, to evaluate, assess and make final selection. Due to complexity and diversity of possible hydraulic systems, circuits and working conditions Oilpath and its employees can only offer general product information. It is the sole responsibility of the user to ensure that all product specifications, safety warnings, government regulations and correct procedures are considered and met.

Oilpath Hydraulics Pty Ltd has endeavored to produce accurate information in this Price List and shall not be responsible for any incorrect information that results from unintentional oversight.

Due to the continuous improvements of product specifications in this Price List are subject to change by Oilpath Hydraulics Pty Ltd at any time, without notice.

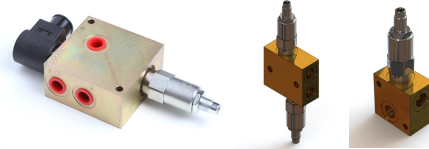
**All prices in this Price List exclude Goods & Services Tax (GST)**

**All prices in this Price List are subject to change without notice**

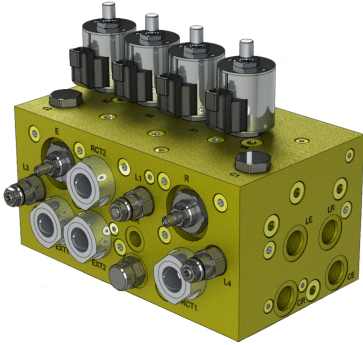
**Oilpath reserve the right to charge for Minimum orders under \$40**

## Other Products & Specials

# OILPATH



## Products



Oilpath designed & manufactured custom manifolds

Valve Packages including OP110 in-line relief, OP115 Cross line relief & Op137 Quick Hitch Valves. Contact factory or visit valve packages on Oilpath website [www.oilpath.com.au](http://www.oilpath.com.au)

*Special on Bar Manifolds  
call factory for pricing*




## HYDRAFORCE

POWER FORWARD

Australia's Premier Preferred HydraForce Partner.  
Australia's Largest Stock and experienced technical support.



## VALVOLE ITALIA®

Australian Partners of Valvole Counterbalance cartridges and valve blocks, see price list for pricing




## SOURCE FLUID POWER

Source Fluid Power Motorised Flow control cartridges. Call factory for technical and pricing information



## OP11 & OP10-4 DIRECTIONAL CONTROL VALVE PARALLEL CIRCUIT



- Nominal Flow 45 l/min
- Maximum Operating Pressure 345 bar
- Up to 4 Spools available
- Low Spool Leakage
- Side or top port Inlet & Outlet
- Closed Circuit & Power Beyond options
- HydraForce Relief Valve (OP11)
- Hardened Steel Non-Return Check Seat
- New Handle & Air Option



Valve Model	Spool Types		Relief Setting	Options	
OP11	D	Double Acting	Specify Relief Valve Pressure Setting 100 - 5000 psi HydraForce Relief Valves on OP11  No Setting required with NR option	PB	High pressure carry over. Plug supplied in package as standard
	Q	Double Acting low flow version		CC	Closed Centre
	S	Single Acting		NR	Relief valve not required
	M	Motor Spool		SCDA	Spring centred detented to port A
OP10  (4 spool only)			400 - 5000 psi Oilpath Relief valves on OP10-4	SCDB	Spring centred detented to port B
				A	Air Control (OP118) supplied only with manual override
				D	Three position detent
				E	Electric limit switch followed by numeral indicating spools
			R	Cable Control	

Examples

OP11	D	2000	PB
OP11	DS	2500	D1
OP11	DDD	1500	D1A23
OP10	DSDM	3500	SCDB23

All codes prefaced by OP10 or OP11

<b>OP11/10 45 LPM Valve Prices</b>	<b>Part Number</b>	<b>Description</b>	<b>List Price Base Valve</b>	<b>15% discount for No Options (Double Acting) List Price</b>	
	0111xxxx	Single Spool Valve	334	290	
	0112xxxx	Two Spool Valve	513	446	
	0113xxxx	Triple Spool Valve	681	592	
	0104xxxx	Four Spool Valve	840	730	
<b>OPTIONS for OP11/10</b>	<b>Part Number</b>	<b>Description</b>	<b>List Price</b>		
D1	507020	Detent per spool, (three pos.) factory fitted # indicates pos.	39		
CC	511048	OP10 Pressure Relief Blanking Plug kit, for closed centre	39		
	511014	OP11 Pressure Relief Blanking Plug kit, for closed centre	48		
E1	503003	Electric Limit Switch for single spool valve, factory fitted Note: Micro switch is not included in price	113		
E12	503004	Electric Limit Switch for double spool valve, factory fitted Note: Micro switch is not included in price	209		
E123	503005	Electric Limit Switch for triple spool valve, factory fitted Note: Micro switch is not included in price	289		
E1234	503006	Electric Limit Switch for four spool valve, factory fitted Note: Micro switch is not included in price	377		
	503010	Micro Switch for above kits, (one per valve) standard micro switch. This switch has a weather-proof rating to IP67	84		
13A	503009	Optional micro switch sleeve for S/A spools with code E, kit only	20		
Q		Optional D/A spool with metering for low flow DC power units	POA		
SCDA	509018	Spring Centred Detent with det. acting on A port is pressurised	130		
SCDB	509012	Spring Centred Detent with det. acting on B port is pressurised	130		
S/O	509010	Spring offset to "B" (No centre position)	43		
A1		OP118 Air Kit with handle control	167		
		Cable RVC Controls, cables and connection kits	POA		

OP10/11 SPARES	Part Number	DESCRIPTION	LIST PRICE		
	RV50-26A-0-P-50	HydraForce Relief Valve up to 5000 psi	160		
	RV10-26A-0-N-30	HydraForce Relief Valve up to 3000 psi	144		
	512011	Seal Kit Single Spool	28		
	512015	Seal Kit Double Spool	31		
	512043	Seal Kit Triple Spool	34		
	512017	Seal Kit Four Spool	37		
	511048	CC OP10 Pressure Relief Blanking Plug kit, for closed centre	43		
	511014	OP11 Pressure Relief Blanking Plug kit, for closed centre	54		
	509018	SCDA Spring Centred Detent with det. acting on A port is pressurised	140		
	509012	SCDB Spring Centred Detent with det. acting on B port is pressurised	140		
	509001	Spring Centering Kit to suit all spools, without spring cap	38		
	507020	D1 Detent per spool, (three pos.) kit	42		
	506081	OP118 Air Kit for OP11	177		
	505016	Relief Valve complete cartridge including lift drop check	116		
	504503	Handle Lever complete with nut and rubber knob M8	31		
	504504	Handle Lever Stainless Steel M10 diameter	35		
	504501	Handle Lever complete with nut and rubber knob	31		
	504027	Lever Box with shift leg & rubber boot but no handle	96		
	503010	Micro Switch for below kits, (one per valve) standard micro switch has a weather-proof rating to IP67	92		
	503009	13A Optional micro switch sleeve for S/A spools with code E, kit only	130		
	503003	E1 Electric Limit Switch for single spool valve, kit Note: Micro switch is not included in price	130		
	503004	E12 Electric Limit Switch for double spool valve, kit Note: Micro switch is not included in price	226		
	503005	E123 Electric Limit Switch for triple spool valve, kit Note: Micro switch is not included in price	313		
	503006	E1234 Electric Limit Switch for four spool valve, kit Note: Micro switch is not included in price	406		
	416220	Rubber Boot Bottom Clips	4		
	416219	Rubber Boot Top Clips	4		
	416009	Relief Valve Main Spring Z	24		
	416008	Relief Valve Main Spring X	24		
	416005	Relief Valve Main Spring Y	24		
	413002	Rubber Boot for lever box	11		
	340001	Spring Cup supplied without M5 cap screws	27		
	249017	Q Optional D/A spool with metering for low flow	POA		
	249004	Motor Spool with no spring centering mechanism	116		
	249003	Single Acting Spool with no spring centering mechanism	116		
	249002	Double Acting Spool with no spring centering mechanism	116		
		With spring centering mechanism ADD	38		

## OP20 DIRECTIONAL CONTROL VALVE SERIES PARALLEL CIRCUIT



- Nominal Flow 100 l/min Hi Flow version 120 l/min
- Maximum Operating Pressure 275 bar
- Up to 5 Spools available
- Low Spool Leakage
- Side or top port Outlet
- Closed Circuit & Power Beyond options
- Choice of Relief Valves
- Individual Load Checks on each "D" & "S" Spool
- Proportional Air, or "on-off" air, both with handle option



Spool Types		Relief Setting	Options			
D	Double acting		Specify pressure within the range of 600 – 4000 psi	PB	High pressure carry over	D
S	Single acting	CC		Closed centre	E	Electric limit switch
M	Motor control	NR		Relief not required	W	Air control OP106
K	Flow control spool not pressure compensated	BF		Bottom faced outlet	R	Cable control Morse RCV
L	Double acting spool with no load check	SCDA		Spring centred detent to "A"	J	Proportional air control
P	Pressure Compensated flow control 45 l/min max	SCDB		Spring centred detent to "B"	H	Handle on auxiliary control e.g. W1H1
Please note maximum tank pressure is 250 psi on all OP20 valves		HI FLOW		Hi Flow to 120 l/min with 3/4" or 1 1/16" ports & R2 Relief	OP 106S	Electric over air solenoid control state voltage required. E.g. OP106S24V
		MU		Special plating and hardware for mine or marine use	UR	Solenoid operated unloading relief valve state voltage
		RESTA		Restricted detent to A port	RESTB	Restricted detent to B port

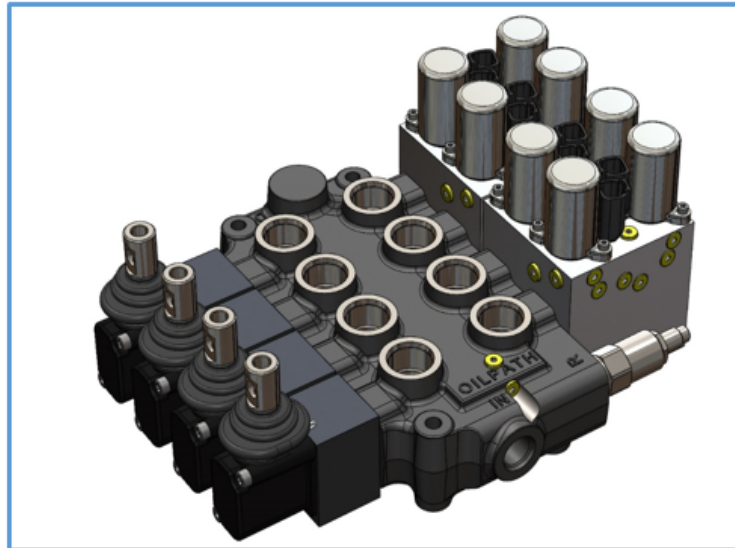
Examples of ordering codes: **OP20 D 2000 PB**  
**OP20 DDS 2000 W123H123**  
**OP20 DSSS 2000 SCDB1J234**  
**OP20 DDDDD 1500 UR24V**

All codes are prefaced with OP20

<b>OP20 100 LPM Valve Prices</b>	<b>Part Number</b>	<b>Description</b>	<b>List Price Base Valve</b>	<b>15% discount for No Options (Double Acting) List Price</b>	
	0201xxxx	Single Spool Valve	449	390	
	0202xxxx	Two Spool Valve	661	575	
	0203xxxx	Triple Spool Valve	891	775	
	0204xxxx	Four Spool Valve	1141	992	
	0205xxxx	Five Spool Valve	1408	1224	
<b>OPTIONS for OP20</b>	<b>Part Number</b>	<b>Description</b>	<b>List Price</b>		
P	-	Priority Flow Control Spool Factory fit only, lead time applies	346		
M	-	Motor Spool, penalty per each when factory fitted	0		
K	-	Spool includes friction detent and can only be factory fitted	95		
L	-	L Spool is D/A and has no load checks, used for high flows applications	37		
D1	507007	Detent per spool, (3 position) factory fit, # indicates position	44		
SCDB	509020	Spring Centred Detent with det. Acting on B port is pressurised	133		
SCDA	509007	Spring Centred Detent with det. acting on A port is pressurised	133		
PB	511003	High Pressure Carry over plug for power beyond "Hi-Cap"	25		
PBH	511005	High Pressure Carry over plug 1- 1/16" UNF Hi - Flow	60		
CC	511047	Closed Centre Plug (Plug A) part of kit for closed centre	24		
NR	511002	Pressure Relief Plug (Plug B) part of kit for closed centre	23		
LW	-	Pressure Relief Lock Wire (lead seal)	25		
BF	-	Bottom Face Outlet available only as special build from factory	POA		
S/O	-	Spring Offset P-B (No Centre Position)	31		
E	503012	Electric Limit Switch, one micro switch supplied in price per spool	POA		
MU	-	Mine Use per spool, factory build only, nylon end caps and plated spool	31		
W1	506023	OP106 air shift	187		
-	506028	OP106 Solenoid manifold kit (includes manifold, screws and 'O' rings. 12 or 24 volt DC	95		
-	506027	OP106 Solenoid kit (includes manifold kit, and 2 off solenoid valves	410		
-	506025	OP106 Solenoid Air kit (incl. OP106 kit, manifold, and 2 off solenoid valves 24 volt DC	575		
-	506031	same as above for 12volt DC	575		
H1	-	Used only in price build for new assembly requiring dual control, (e.g.) lever and air or lever and cable.	117		
J1	506002	Proportional Air shift	POA - TO BE PHASED OUT		
HI- FLOW	-	Special D/A or S/A spools with load checks for 25 gpm for Tippers and fitted into single or double spool valves with 3/4" BSPT ports & R2 Relief per valve	44		
-	-	If above spools are ordered with 1 1/16" UNF service ports, per spool and in a valve with R1 or R2 relief cavity.	44		
FBC	-	Port relief cavity last spool - suit RV08-20A not including cartridge	74		
Port Relief	RV08-20A-0-N- XX	Relief Valve	113		
-	CP08-20- N	Plug VC08-2to suit above cavity (CP08-20N)	23		
AS xx	SVRV10- 26X	Relief and solenoid unloading adaptor, nominate voltage and pressure.	319		
Cable	-	RVC Controls, cables and connection kits	POA		
S1	-	Single Solenoid spool operation kit	TBA		
S2	-	Double Solenoid spool operation kit	TBA		

OP20 SPARES	Part Number	DESCRIPTION	LIST PRICE		
	MU for Spool	For Marine or mine use ADD on per spool (exchange for like)	28		
	513044	Motor Spool with spring centering mechanism	164		
	513037	L Spool with spring centering mechanism	164		
	513034	Double Acting Hi Flo Spool with spring centering mechanism	153		
	513029	Single Acting Hi-Flo Spool with spring centering mechanism	153		
	513028	Single Acting Spool with spring centering mechanism	153		
	513027	Double Acting Spool with spring centering mechanism	153		
	512055	OP106 Seal Kit all seals	37		
	512002	Seal Kit Single Spool all seals and metal step washers	38		
	512008	Seal Kit Double Spool all seals and metal step washers	50		
	512029	Seal Kit Triple Spool all seals and metal step washers	62		
	512004	Seal Kit Four Spool all seals and metal step washers	70		
	512005	Seal Kit Five Spool all seals and metal step washers	82		
	512021	OP105 Seal Kit all seals	POA		
	512019	OP104 Seal Kit all seals	POA		
	512016	OP103 Seal Kit all seals	11		
	512007	Proportional Air Seal Kit (old kit with stainless steel piston)	11		
	512003	Proportional Air Seal Kit (new kit with aluminium piston)	90		
	511047	CC Closed Centre Plug (Plug A) part of kit for closed centre	26		
	511005	PBH High Pressure Carry over plug 1- 1/16" UNF Hi - Flow	64		
	511003	PB High Pressure Carry over plug for power beyond "Hi-Cap"	27		
	511002	NR Pressure Relief Plug (Plug B) part of kit for closed centre	25		
	509020	SCDB Spring Centred Detent with det. Acting on B port is pressurised	143		
	509017	Spring Centering Kit to suit all spools, supplied without spring cap	50		
	509007	SCDA Spring Centred Detent with det. acting on A port is pressurised	143		
	507007	D1 Detent per spool, (3 position) kit, # indicates position (507007)	46		
	506028	OP106 Solenoid manifold kit (includes manifold, screws and 'O' rings 12 or 24 volt DC	102		
	506027	OP106 Solenoid kit (includes manifold kit, and 2 off solenoid valves 24 volt DC	439		
	506025	OP106 Solenoid Air kit (incl. OP106 kit, manifold, and 2 off solenoid valves 24v)	617		
	506023	W1 OP106 air shift	201		
	506002	J1 Proportional Air Shift	428		
	505025	Relief Valve R2 cartridge set to 2000 psi	207		
	505020	Relief Valve R1 (standard) cartridge, set to 2000 psi	153		
	504502	Handle Lever complete with nut and rubber knob	31		
	504028	Lever Box with shift leg & rubber boot but no handle	135		
	504015	H, Kit B used when converting standard lever assembly valve to dual control, (e.g.) lever and air or lever and cable.	103		
	504014	H, Kit A used when fitting dual control, with air or cable already fitted.	166		
	504010	Handle Assembly Old Style complete including handle lever	147		
	503012	E Electric Limit Switch, one micro switch supplied in price per spool	POA		
	502019	Spool Eye New Style to suit lever box handle (current style)	29		
	413001	Rubber Boot for lever box	11		
	340004	Spring Cap supplied without M6 cap screws	31		
	249012	Single Acting Hi Flo Spool only	126		
	249011	Double Acting Hi Flo Spool only	126		
	249011	L Spool only	126		
	249008	Motor Spool only	134		
	249007	Single Acting Spool only	126		
	249006	Double Acting Spool only	126		

## OP20 DIRECTIONAL CONTROL VALVE PROPORTIONAL ON/ OFF SOLENOID OPTION



- Nominal Flow 100 l/min Hi Flow version 120 l/min
- Maximum Operating Pressure 275 bar
- HydraForce solenoids and cartridges
- Waterproof weather resistant IP69K rated coils
- Coils have 100% duty cycle @ + or – 15% of voltage
- Optional lever operated manual override
- Up to 5 Spools available

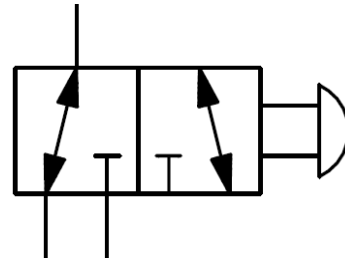
List Price	1 Spool	2 Spool	3 Spool	4 Spool	5Spool
Solenoid Option	TBA	TBA	TBA	TBA	TBA
Including Manual override	TBA	TBA	TBA	TBA	TBA



### OP27 THREE PORT SELECTOR VALVE



- 3 – Port Selector Valve Cast Iron Construction
- Simple Push – Pull Operation
- Two Position Detent Option
- Pneumatically Operated Option
- Flow Capacity up to 25 gpm
- Easily added to existing OP20 Circuit to facilitate control of additional equipment
- Cam Roller, Spring Return Option



#### OPTIONS

##### Port Sizes

1/2" BSPT   3/4" BSPT   1" BSPT

7/8" UNF   1-1/16" UNF

1-5/16" UNF   New



##### Controls

Pneumatically Actuated (B Kit)

OP20 Handle

Spring Offset

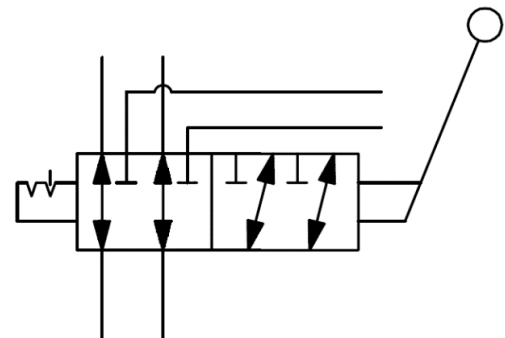
Cam Roller, Spring Return Operation

<b>OP27 95 LPM 3 Pt Selector Valve</b>	<b>Part Number</b>	<b>Description</b>	<b>List Price</b>		
	2700100	3/4" Ports and fitted with a plastic knob	226		
	2701300	3/4" Ports and fitted with spring offset kit	244		
	2706002	3/4" Ports and fitted with spring offset kit & new style air kit	358		
<b>OPTIONS for OP27</b>	<b>Code</b>	<b>Description</b>	<b>List Price</b>		
	H	Handle operated, OP20 style	72		
	D	Detent	128		
	P	Plunger Activation Option (must include S/O option)	POA		
	CR	Cam roller (must include S/O option)	157		
<b>OP27 SPARES</b>	<b>Part Number</b>	<b>DESCRIPTION</b>	<b>LIST PRICE</b>		
	512036	Seal Kit (Spool O rings)	12		
	509013	Spring offset kit	42		
	507017	Detent kit	293		
	506044	B1 Air Kit (used with s/off)	148		
	504011	Old handle kit Complete with including handle lever	162		
	420003	Plastic Knob without washer	42		
	249001	Spool without knob or washers, plain	145		

**OP80 SIX PORT SELECTOR VALVE**



- 6 – Port Selector Valve Cast Iron Construction
- Flow Capacity up to 25 gpm
- Rugged – Handle Operation
- Two Position Detented
- Pneumatically Operated Option
- Push Pull Option
- Spring Offset Option



**OPTIONS**

**Port Sizes**

1/2" BSPT   3/4" BSPT   1" BSPT  
 7/8" UNF   1-1/16" UNF

**Controls**

Pneumatically Actuated (B Kit)  
 Spring Offset or Push Pull

<b>OP80 95 LPM 6 Port Selector Valve</b>	<b>Part Number</b>	<b>Description</b>	<b>List Price</b>		
	08000001	OP80 1/2" BSPT fitted with 2 position detent and OP20 style handle	373		
	08001000	OP80 1/2" BSPT K fitted with a black plastic knob (push pull)	322		
	08063000	Fitted with Air Kit and spring offset kit	461		
<b>OPTIONS for OP80</b>	<b>Part Number</b>	<b>Description</b>	<b>List Price</b>		
	MU	Marine use lever box and end cap	98		
<b>OP80 SPARES</b>	<b>Part Number</b>	<b>DESCRIPTION</b>	<b>LIST PRICE</b>		
	512037	Seal kit (Spool O rings)	6		
	509014	Spring offset kit	40		
	507002	Detent Kit Complete assembly	117		
	506044	B1 Air Kit (used with s/off)	148		
	504502	Handle Lever complete with nut and rubber knob	31		

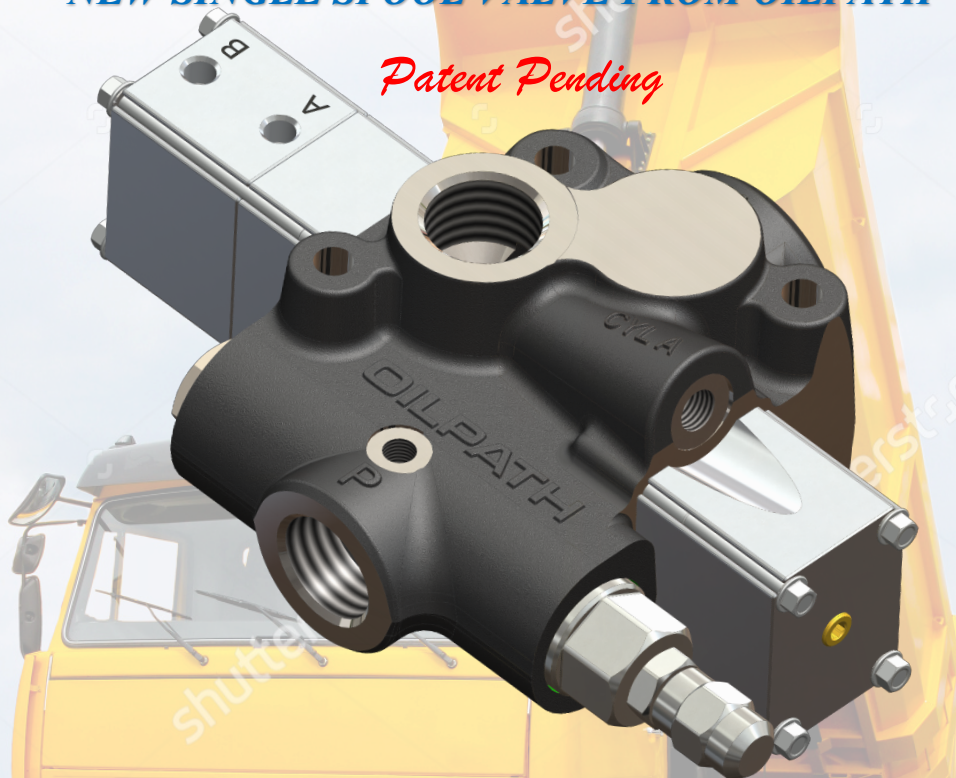




## OP22-1 160 LPM TRUCK VALVE

*BASED ON THE HIGHLY SUCCESSFUL OP22  
TRUCK & TRAILER VALVE  
NEW SINGLE SPOOL VALVE FROM OILPATH*

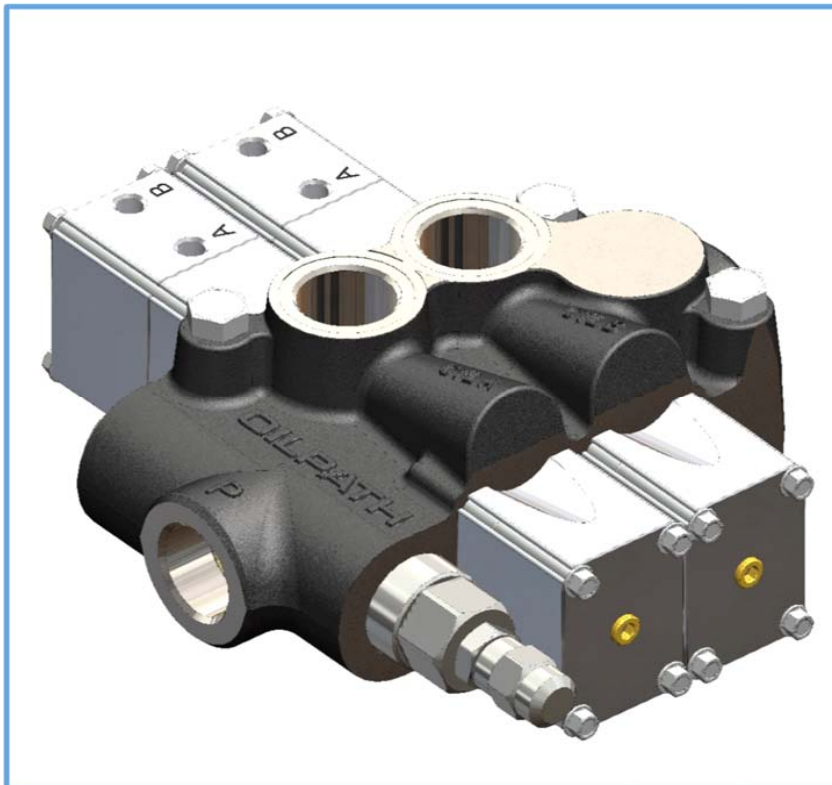
*Patent Pending*



- 160 l/min nominal single spool tipper truck valve
- 245bar maximum pressure
- 1" BSPP service ports & 1 1/4" BSPP tank port
- On-off & or proportional operation
- Full Flow Oilpath R3 Adjustable Direct Acting Relief Valve
- **Standard** pressure auxiliary port for "Body Up" alarm
- **Standard** Test point for ease of pressure setting
- Cast & manufactured in Australia
- Custom designed large internal tank galleries for low pressure drop
- Recommended to be utilized alongside the Oilpath APV Hoist Check

[sales@oilpathhydraulics.com.au](mailto:sales@oilpathhydraulics.com.au) [www.oilpath.com.au](http://www.oilpath.com.au) Phone 08 82774933 Fax 08 82779126

## OP22 TIPPER VALVE



- 160 l/min nominal twin spool tipper truck valve
- 245bar maximum pressure
- Full Flow Oilpath R3 direct acting relief valve
- Proportional operation
- Optional "Body Up Alarm" ports
- 1"BSPP service ports & 1 ¼" BSPP tank port
- Cast & manufactured in Australia
- Custom designed large internal tank galleries for low pressure drop

OP22 SINGLE SPOOL 160LPM VALVE PRICES	Part Number	DESCRIPTION	NET PRICES Qty 10+	Qty 5 - 9	Qty 1-4
	02210003	OP22 SINGLE SPOOL R3 1"BSPP 1/8" BSPP PRESSURE PORT SWITCH 1/8" TEST POINT	228	250	310

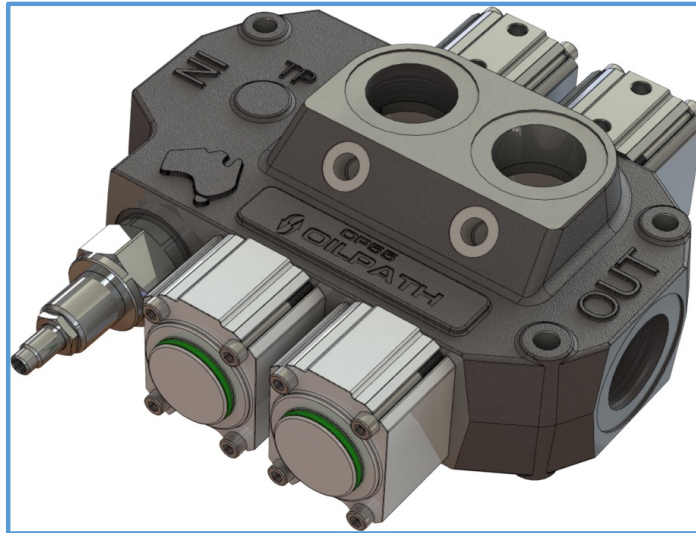
OP22 DOUBLE SPOOL 160 LPM VALVE PRICES	Part Number	DESCRIPTION	NET PRICES Qty 10+	Qty 5 - 9	Qty 1-4
	02220007	OP22 SS A12 R3 1"BSPP - P,A,B 1-1/4"BSPP-T NO PORT RELIEF CAVITY (STD)	370	440	510

OP22 VALVE SPARES	Part Number	Description	NET PRICE		
	512098	OP22 Seal kit	23		
	505069	OP22 R3 Relief Valve Cartridge	129		
	505052	OP22 Spring Chamber Vent	20		
	504060	OP22 Optional Handle Assembly	NO LONGER AVAILABLE		

OP25 to be discontinued. Please see more economical new OP22-1

OP25 PROPORTION AIR ACTUATED TRUCK VALVE	Part Number	Description	LIST PRICE		
	025xxxx		POA - TO BE PHASED OUT - REFER OP22 SINGLE SPOOL		

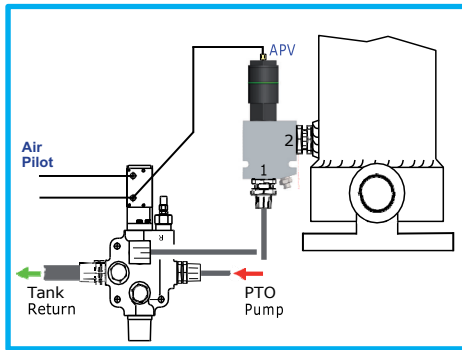
**OP55 TWIN SPOOL TIPPER TRUCK VALVE**



- 300 l/min nominal flow capacity
- 245 bar maximum working pressure
- Proportional operation
- 1-1/4" BSPP service ports & 1-1/2" BSPP tank port
- Cast & manufactured in Australia
- High flow spools for fast cycle times
- Custom designed large internal galleries for Low pressure drop and fast cycle time. Less than 45PSI at 250 l/min through valve
- Designed specifically for efficient fast cycle times on truck and trailer applications
- High Quality HydraForce relief valve
- Individual pressure switch port option
- Test Port option for accurate PRV setting (TP)

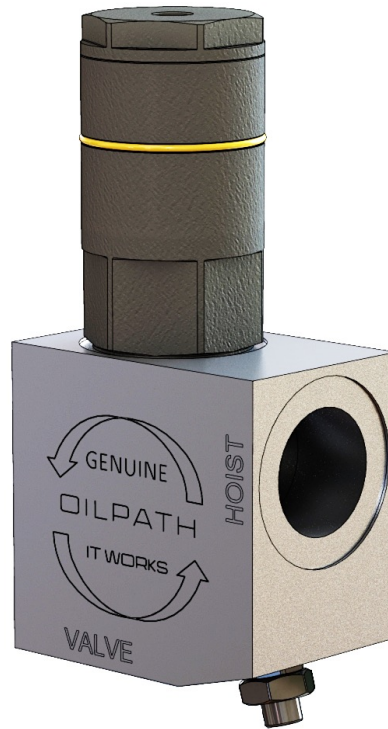
OP55 DOUBLE SPOOL 300 LPM VALVE PRICES	Part Number	DESCRIPTION	NET PRICES Qty 10+	Qty 5 - 9	Qty 1-4
	05500002	OP55 SS A 12 R55 1 BSPP P,A&B 1-1/4" BSPP TANK 2500 OILPATH STD	525	595	665

**The Industry Benchmark OPAPV Hoist Blocking Valve is now more efficient with greater flow capacity and it is smaller!**



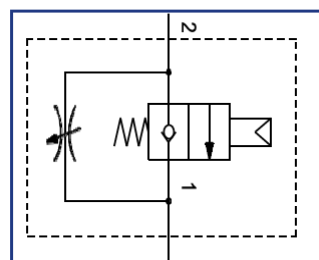
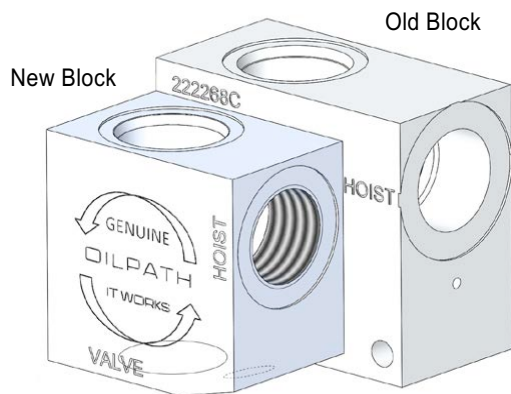
**Air Pilot Operation**

Function	DC1	DC2	APV1
Raise	Pressure	Vent	Vent
Hold	Vent	Vent	Vent
Lower	Vent	Pressure	Pressure



- Flow Capacity increased to 200 lpm see chart
- Smaller body footprint (see overleaf)
- Large ratio balanced pneumatic cylinder ensures fast efficient response
- Extremely low and improved pressure drop for fast lowering see chart
- Extremely low (2.1bar) air pressure required for operation
- Emergency slow lowering facility
- Easy installation to new or existing vehicles
- Valve clamping options available on request

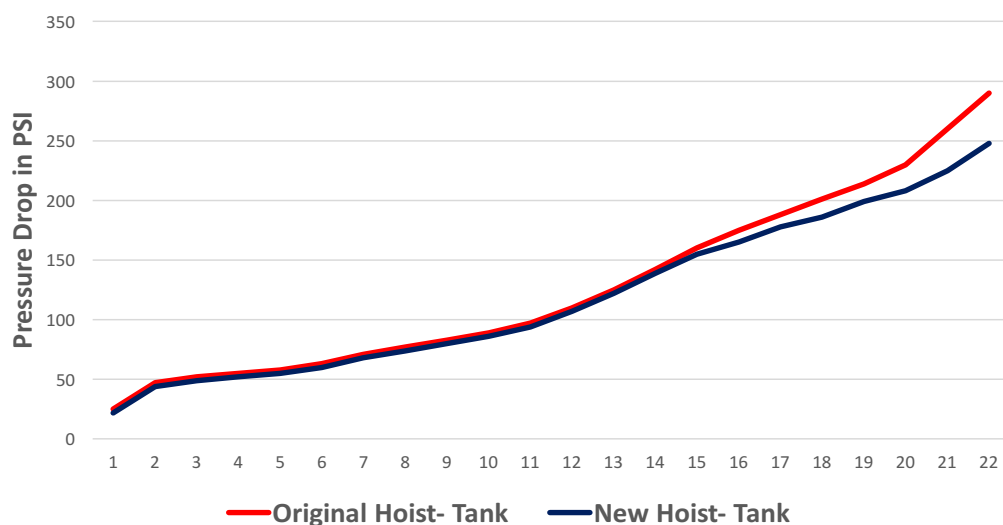




Schematic Diagram

Block height shorter by 11mm and 24mm on width

### Hoist Check Pressure Drop



### Important Information

This valve must be installed by appropriately trained Hydraulics Operative as per the installation diagram overleaf.

Do not attempt to disassemble this valve as it is designed to be maintenance free, any interference with this assembly will void all warranties and liabilities.

The only exception to the above is the external BS-029 neoprene "Breather" O-ring that needs to be replaced after 5 years or sooner if there are visible signs of deterioration.

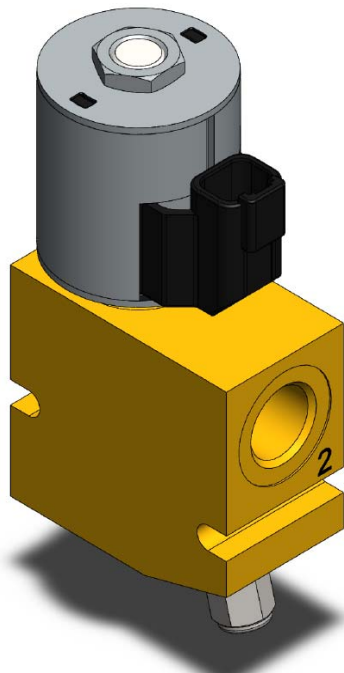


Model

OP-EHCV

150 l/min Solenoid Operated Hoist Check Valve

PAGE No.



**Description**

In Line, direct acting, solenoid operated hoist check valve, for use in block or load holding.

**Operation**

To raise pressure flows from port 1 to port 2  
To lower flow goes from port 2 to port 1.

**Features**

Hardened seats for long life and low leakage and low pressure drop.

Manual override.

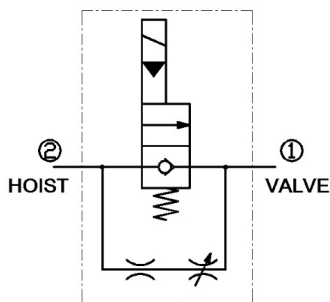
**Sizes**

Comes in two sizes, 57 l/min & 115 l/min

57 l/min with 1/2" BSPP Ports

115 l/min with 3/4" BSPP Ports

12 or 24 volt Deutsch Coils

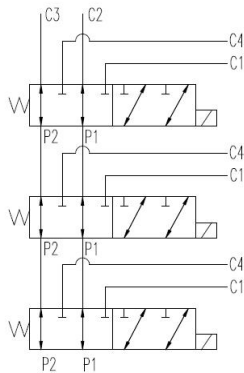


Hoist Check Valve (Pneumatic)	Part Number	Description	NET PRICES Qty 20+	Qty 10-19	Qty 5-9	Qty 1-4
	690222OILPATH	OP-APV-16-22 HOIST BLOCKING VALVE 1" BSP	230	260	310	340

Hoist Check Valve (Solenoid operated)	Part Number	Flow l/min Voltage Ports	NET PRICE 5+	<5	
	690052	57 24 1/2" BSPP	145	175	
	690053	115 24 3/4" BSPP	173	203	
	690106	115 12 3/4" BSPP	173	203	
	690107	57 12 1/2" BSPP	145	175	

	OP80S-3/8"BSPP	OP80S-1/2"BSPP
Max pressure	250bar	
Max flow rate	40L/min	60L/min
Hydraulic fluid	mineral oil	
Fluid temperature	-20~80°C	
Recommended viscosity	10~400mm <sup>2</sup>	



**6/2SELECTORVALVE**

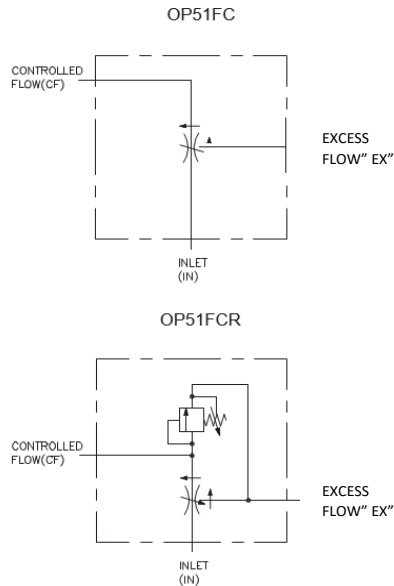
The OILPATH OP80S-3/8"BSPP and OP80S-1/2"BSPP stackable 6 port/2 way change over valves are designed to be used when extra circuits are to be operated from one control lever on machines such as fork lift trucks, agricultural front end loader, telescopic handlers, and in transmission circuits.

The OILPATH selector valves have been carefully designed to meet the demands of progressive machine manufacturers for cost effective, reliable circuit selectors. The valve bodies are made from a special high quality cast iron which is machined, using advanced machining techniques, to precise tolerances, ensuring, along with the other component parts, the consistency of the finished product.

OP80S Six Port Selector	Part Number	Description	List Price		
	8103812	OP80S-3/8"BSPP 12 VOLT DC	250		
	8103824	OP80S-3/8"BSPP 24 VOLT DC	250		
	8101212	OP80S-1/2"BSPP 12 VOLT DC	310		
	8101224	OP80S-1/2"BSPP 24 VOLT DC	310		

Maximum Flow – 30 us gpm (114l/min)

Maximum Pressure – 3,000 psi (210bar)



The model OP51FC is a pressure compensated swing arm adjustable flow control valve. By swinging the arm thru 90°, the flow out the CF or controlled low port can be varied within the range given in the specification.

Any remaining flow is bypassed to the EX or excess flow port. This flow can be used to power another circuit or can be returned to tank. Once the controlled flow is set, it will remain nearly constant with variations in pressure on either the controlled or excess flow ports.

Please note, if during operation the controlled flow port is blocked, then the valve will compensate in such a manner that there will also be no flow at the EX or excess flow port. With no relief valve to protect the flow in the circuit upstream, pump failure and or component damage will occur. If this situation could occur then it is recommended to fit an extra relief valve upstream or use the model OP51FCR valve.

OP51 Priority Flow Control	Part Number	Description	List Price		
	OP51FC- 1/2	1/2" BSPP	220		
	OP51FC - 3/4	3/4" BSPP	220		
	OP51FCR - 1/2	1/2" BSPP	240		
	OP51FCR - 3/4	3/4" BSPP	240		

## Custom Manifolds



At Oilpath we believe that better performance comes from working together, and our engineers and field representatives will work with you to design your custom hydraulic manifold. We understand that optimising the performance of your equipment starts with creative hydraulic integrated circuits.

Manifolds can be manufactured in your specified materials including anodised aluminium, steel, cast iron, brass or stainless steel and can be plated to requirements.

Please contact the factory to discuss your design requirements.



### OP111 CETOP 3 & 5 SUBPLATES



- Mounting interface Cetop 3 or Cetop 5
- Manufactured from high grade aluminium alloy and Dura-bar
- Maximum operating pressure 245 bar for Alloy
- Maximum operating pressure 345 bar for Dura-Bar
- Side outlet, Bottom Outlet available

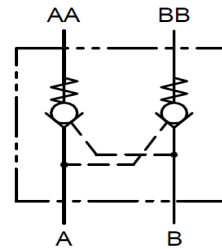
<b>CETOP 3 SUB-PLATE OPTIONS</b>	<b>Part Number</b>	<b>Description</b>	<b>List Price</b>		
	OP111-A	Single Cetop 3 alloy sub-plate, side ported 3/8" BSPP	81		
	OP111-A-C	Single Cetop 3 cast iron as above but for 350 bar	108		
	OP111-B	Single Cetop 3 alloy sub-plate, rear ported 3/8" BSPP	113		
	OP111-B-C	As above but produced in cast iron for 350 bar rating.	172		
	OP111-N	Single Cetop 3 alloy sub-plate, inline ported 3/8" BSPP 40 l/min. Sub-plate with Direct Acting Pressure Relief Valve	113		
	OP111-R	Cetop 3, Alloy, OP10 relief cartridge, 90 - 210 bar 30 l/min. Sub-plate with Direct Acting Pressure Relief Valve	268		
	OP111-A-R-*	Cetop 3, Alloy, RV08-20A-0-N relief cartridge, 2 - 210 bar 40 l/min. Sub-plate with Pilot Operated Pressure Relief Valve	394		

<b>CETOP 5 SUB-PLATE OPTIONS</b>	<b>Part Number</b>	<b>Description</b>	<b>List Price</b>		
	OP1115-A	Single Cetop 5 alloy sub-plate, side ported 1/2" BSPP	125		
	OP1115-A-C	Single Cetop 5 cast iron as above but for 350 bar	125		
	OP1115-B	Single Cetop 5 alloy sub-plate, rear ported 1/2" BSPP	157		
	OP1115-B-C	As above but produced in steel for 350 bar rating.	351		

### OP101 DOUBLE LOCK VALVE



- Nominal Flow 12 gpm
- Max Working Pressure 3000 psi 210 Bar
- Pilot Ratio 3:1
- Standard Port Size ½" BSPT
- OP101-C for direct mounting on cylinders
- OP101-I for in-line applications
- Optional port sizes 3/8" BSPT & 3/4" UNF

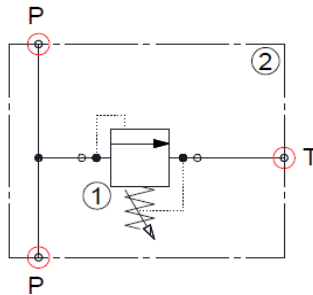
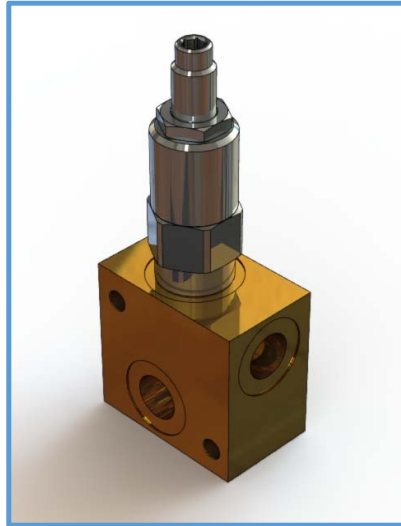


OP101 Double Lock Valve	Part Number	Description	List Price		
	OP101-C	Cylinder mounted with ½"BSPT ports	213		
	OP101-I	In-Line with ½" BSPT ports	204		

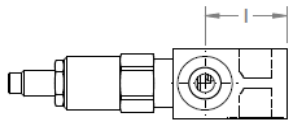
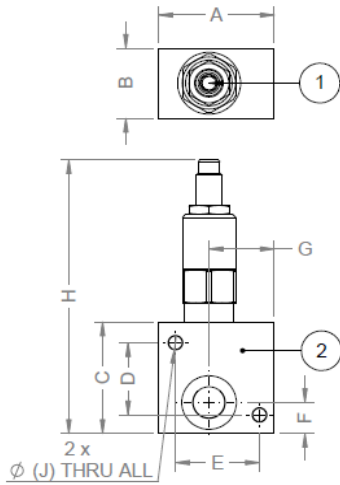
Options for OP101	Part Number	Description	List Price		
	3/8" BSPT	All port machined 3/8" BSPT	N/C		
	3/4" UNF	All port machined 3/4" UNF	N/C		
	OP101-7	Piston fitted with 'o' ring	10		



**OP110 THROUGH PORTED IN LINE RELIEF VALVE**



- **Manufactured from high grade aluminium**
- **Flow variations between 28 and 113 l/min**
- **Pressures from 50 to 5000 PSI**
- **Utilising world class HydraForce Relief Valve Cartridges**
- **In line mounting style**
- **3/8" & 1/2" BSPP porting options**



DIMS	110820**	110020**	11052650
A	55	63.5	63.5
B	34	40	40
C	54	63.5	63.5
D	35	43	43
E	40	48.5	48.5
F	15	17.5	17.5
G	31	38.5	38.5
H	132.5	141.9	141.9
I	39	44.7	44.7
J	6.5	6.5	6.5

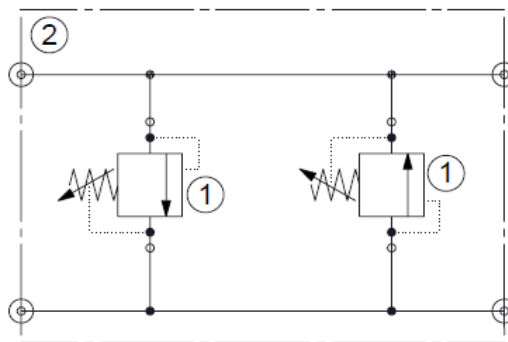
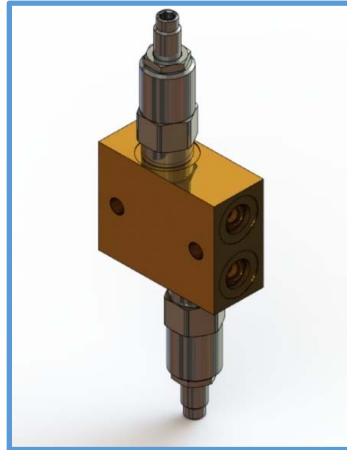
PART No.	CARTRIDGE	LINE BODY PART NO.	PRESSURE RANGE (PSI)	NOMINAL FLOW
11082005	RV08-20A-O-N-5	222121 (ALLOY)	50 - 600	23 l/min
11082009	RV08-20A-O-N-9	222121 (ALLOY)	100 - 1300	23 l/min
11082018	RV08-20A-O-N-18	222121 (ALLOY)	250 - 2600	23 l/min
11082033	RV08-20A-O-N-33	222121 (ALLOY)	250 - 4000	23 l/min
11002006	RV10-20A-O-N-6	222009 (ALLOY)	50 - 600	38 l/min
11002012	RV10-20A-O-N-12	222009 (ALLOY)	150 - 1200	38 l/min
11002023	RV10-20A-O-N-23	222009 (ALLOY)	250 - 2300	38 l/min
11002033	RV10-20A-O-N-33	222009 (ALLOY)	250 - 3300	38 l/min
11002604	RV10-26A-O-N-4	222009 (ALLOY)	100 - 400	113 l/min
11002615	RV10-26A-O-N-15	222009 (ALLOY)	150 - 1500	113 l/min
11002630	RV10-26A-O-N-30	222009 (ALLOY)	400 - 3000	113 l/min
11052650	RV50-26A-O-P-50	222509 (STEEL)	400 - 5000	113 l/min

Steel Line Bo

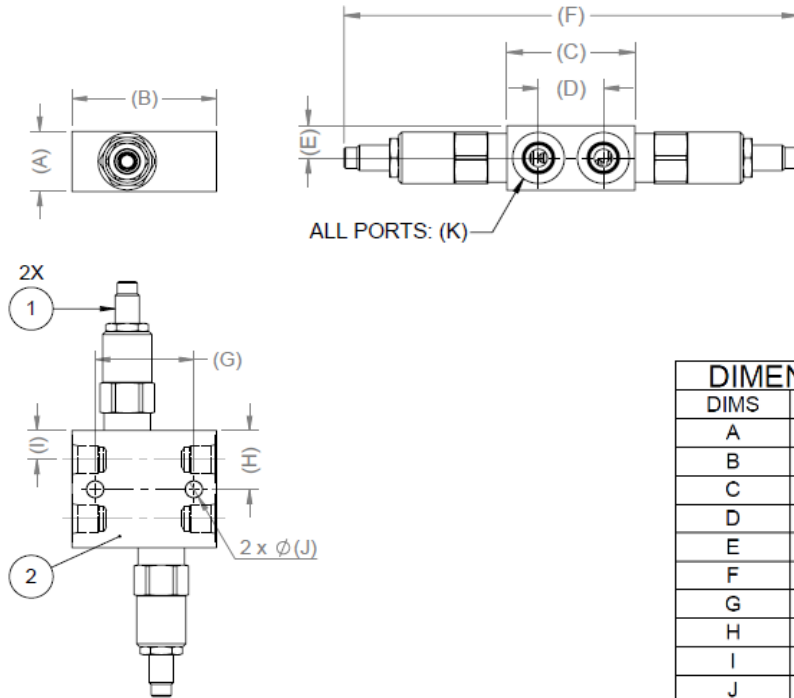
ALL PORTS: 222009 = 1/2" BSP-P  
 ALL PORTS: 222121 = 3/8" BSP-P  
 ALL PORTS: 222509 = 1/2" BSP-P

OP110 Through Ported In-Line Relief Valve	PART No.	CARTRIDGE	LINE BODY PART NO.	PRESSURE RANGE (PSI)	NOMINAL FLOW	List Price		
	11082005	RV08-20A-O-N-5	222121 (ALLOY)	50 - 600	23 l/min	174		
	11082009	RV08-20A-O-N-9	222121 (ALLOY)	100 - 1300	23 l/min	174		
	11082018	RV08-20A-O-N-18	222121 (ALLOY)	250 - 2600	23 l/min	174		
	11082033	RV08-20A-O-N-33	222121 (ALLOY)	250 - 4000	23 l/min	174		
	11002006	RV10-20A-O-N-6	222009 (ALLOY)	50 - 600	38 l/min	178		
	11002012	RV10-20A-O-N-12	222009 (ALLOY)	150 - 1200	38 l/min	178		
	11002023	RV10-20A-O-N-23	222009 (ALLOY)	250 - 2300	38 l/min	178		
	11002033	RV10-20A-O-N-33	222009 (ALLOY)	250 - 3300	38 l/min	178		
	11002604	RV10-26A-O-N-4	222009 (ALLOY)	100 - 400	113 l/min	188		
	11002615	RV10-26A-O-N-15	222009 (ALLOY)	150 - 1500	113 l/min	188		
	11002630	RV10-26A-O-N-30	222009 (ALLOY)	400 - 3000	113 l/min	188		
	11052650	RV50-26A-O-P-50	222509 (STEEL)	400 - 5000	113 l/min	239		

**OP115 CROSS LINE RELIEF VALVE**



- **Manufactured in Australia from high grade aluminium**
- **Flow variations between 28 and 113 l/min**
- **Pressures from 50 to 3000 PSI**
- **Utilising world class HydraForce Relief Valve Cartridges**
- **In line mounting style**
- **SAE-6 & SAE10 porting options**



DIMS	115820**	115020**
A	31.75	36.32
B	74.42	87.12
C	61.72	74.42
D	31.24	37.81
E	15.88	18.16
F	218.81	230.55
G	50.80	63.50
H	30.99	37.34
I	15.24	18.29
J	8.70	8.70
K	SAE 6	SAE 10

PART No.	CARTRIDGE	LINE BODY PART NO.	PRESSURE RANGE (PSI)	NOMINAL FLOW
11582005	RV08-20A-O-N-5	7070160 (ALLOY)	50 - 600	23 l/min
11582009	RV08-20A-O-N-9	7070160 (ALLOY)	100 - 1300	23 l/min
11582018	RV08-20A-O-N-18	7070160 (ALLOY)	250 - 2600	23 l/min
11582033	RV08-20A-O-N-33	7070160 (ALLOY)	250 - 4000	23 l/min
11502006	RV10-20A-O-N-6	7070170 (ALLOY)	50 - 600	38 l/min
11502012	RV10-20A-O-N-12	7070170 (ALLOY)	150 - 1200	38 l/min
11502023	RV10-20A-O-N-23	7070170 (ALLOY)	250 - 2300	38 l/min
11502033	RV10-20A-O-N-33	7070170 (ALLOY)	250 - 3300	38 l/min
11502604	RV10-26A-O-N-4	7070170 (ALLOY)	100 - 400	113 l/min
11502615	RV10-26A-O-N-15	7070170 (ALLOY)	150 - 1500	113 l/min
11502630	RV10-26A-O-N-30	7070170 (ALLOY)	400 - 3000	113 l/min

OP115 Cross-Line Relief Valve	PART No.	CARTRIDGE LINE BODY PART NO. PRESSURE RANGE (PSI) NOMINAL FLOW	List Price		
	11582005	RV08-20A-O-N-5 7070160 (ALLOY) 50 - 600 23 l/min	213		
	11582009	RV08-20A-O-N-9 7070160 (ALLOY) 100 - 1300 23 l/min	213		
	11582018	RV08-20A-O-N-18 7070160 (ALLOY) 250 - 2600 23 l/min	213		
	11582033	RV08-20A-O-N-33 7070160 (ALLOY) 250 - 4000 23 l/min	213		
	11502006	RV10-20A-O-N-6 7070170 (ALLOY) 50 - 600 38 l/min	243		
	11502012	RV10-20A-O-N-12 7070170 (ALLOY) 150 - 1200 38 l/min	243		
	11502023	RV10-20A-O-N-23 7070170 (ALLOY) 250 - 2300 38 l/min	243		
	11502033	RV10-20A-O-N-33 7070170 (ALLOY) 250 - 3300 38 l/min	243		
	11502604	RV10-26A-O-N-4 7070170 (ALLOY) 100 - 400 113 l/min	264		
	11502615	RV10-26A-O-N-15 7070170 (ALLOY) 150 - 1500 113 l/min	264		
	11502630	RV10-26A-O-N-30 7070170 (ALLOY) 400 - 3000 113 l/min	264		



LOAD CONTROL	PART No.	Description	List Price		
	C000D240021100A	C000D240021100A LOAD CONTROL T11A 60 L/MIN 2:1 2000-5000PSI	140		
	C000D285051100A	C000D285051100A LOAD CONTROL T11A 60 L/MIN 5:1 3045-5200PSI	140		
	C000D310031100A	C000D310031100A LOAD CONTROL T11A 60 L/MIN 3:1 2000-5000PSI	140		
	C000D310101100A	C000D310101100A LOAD CONTROL T11A 60 L/MIN 10:12000-5000PSI	140		
	C000M140031100	C000M140031100A LOAD CONTROL T11A 60 L/MIN 3:1 1000-3000 PSI	140		
	C000T130051100A	C000T130051100A LOAD CONTROL T11A 60 L/MIN 5:1 700-3000 PSI	140		
	C040M210031100	C040M210031100A LOAD CONTROL T11A 30 L/MIN 3:1 1000-4000PSI	140		
	C200M110031100	C200M110031100A LOAD CONTROL T11A 75 L/MIN 3:1 1000-2200PSI	154		



# VALVOLE ITALIA®



LOAD CONTROL	PART No.	Parts in Body Description	List Price		
	PJ17073	VALVOLE ITALIA 1/2" DUAL C/BAL 4:1 350 BAR - END C1,C2 PORTS	313		
	SND31L04G12D000	VALVOLE ITALIA 31NPS D L 1/2 DUAL C/BAL 4:1 350 BAR	255		
	SNS31L04G38D000	VALVOLE ITALIA 31NPS S L 3/8 SINGLE C/BAL 4:1 350 BAR	154		
	SNS79L04G14D000	VALVOLE ITALIA 79 S L 1/4 SINGLE C/BAL 4:1 350 BAR	148		