



Australia's Tipper & Trailer Valving Specialist



AUSTRALIAN OWNED AND OPERATED

WHEN IT'S OILPATH, IT WORKS!

OP Tipper Valve Range



OP22-1 Single Spool Truck Valve

160 lpm nominal single spool tipper valve

245 bar maximum pressure

Optimised tank line for maximum speed decent

Pneumatically operated

Proportional operation

1" BSPP service ports with 1 ¼" BSPP tank port

Standard pressure port access for "Body Up" alarm

OP22 Truck & Trailer Valve

160 lpm nominal double spool tipper valve

245 bar maximum pressure

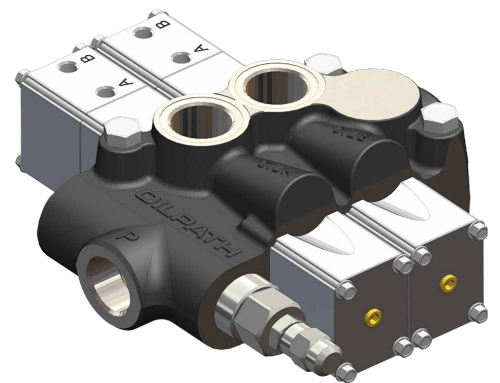
Optimised tank line for maximum speed decent

Pneumatically operated

Proportional operation

1" BSPP service ports with 1 ¼" BSPP tank port

Optional pressure port access for auxiliary functions such as body up alarm



OP55 Truck & Trailer Valve

300 lpm nominal double spool tipper valve

245 bar maximum pressure

Optimised tank line for maximum speed decent

Pneumatically operated

Proportional operation

1 ¼" BSPP service ports with 1 ½" BSPP tank

Optional pressure port access for auxiliary functions such as body up alarm

Optional Test Port for relief valve setting



New improved design

PATENT PENDING



OPAPV Hoist Check Valve

Easy installation to new and existing vehicles

Extremely Low pressure drop for fast lowering with 1" BSPP ports

Anodised air cylinder with stainless piston for corrosion protection.

Maximum operating pressure 210 bar (3,000 psi).

Internal leakage: 0.15cc/minute (3 drops/minute) maximum at 210 bar.

Minimum air pressure to operate:(32psi) Emergency slow lower facility, complies with Industry Standard.

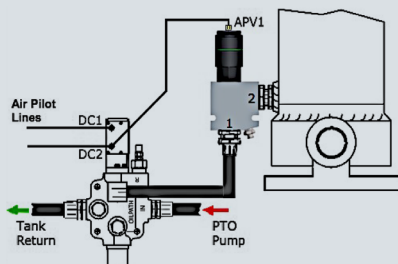
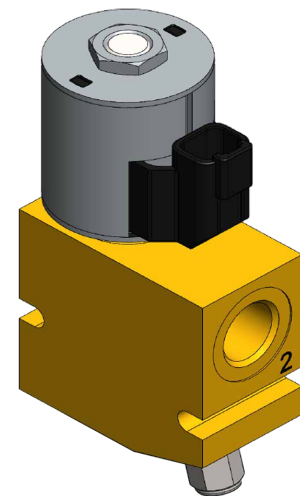
Electric Hoist Check Valve

In Line, direct acting, solenoid operated hoist check valve, for use in block or load holding in similar manner to the OPAPV

Hardened seats for long life and low leakage and low pressure drop.

Emergency slow lowering facility, complies with Industry Standard.

Comes in two sizes, 57 l/min & 115 l/min and 12 or 24 volt



Typical Hoist Check Valve set up

This valve must be installed by appropriately trained Hydraulics Operative as per the installation diagram adjacent.

Do not attempt to disassemble this valve as it is designed to be maintenance free, any interference with this assembly will void all warranties and liabilities.





Oilpath Hydraulics

Oilpath Hydraulics remains the only Designer and Manufacturer of Hydraulic Directional Control Valves in Australia, utilising its experienced long serving team to supply hand honed and fitted spool valves to the highest Quality standards.

Oilpath also designs and manufactures integrated Hydraulic Control Manifolds utilising HydraForce Cartridge valves, and custom designs and manufactures special control equipment to customer requirements.

The Oilpath name is synonymous with directional control valves in the Agricultural Industry. Over the last 20 years Oilpath have also been developing the same excellent reputation for the design and manufacture of hydraulic control manifolds not only for agriculture but for a broad range of other end use applications throughout Australia.

Contact Us

Contact Oilpath or visit our Website for further information on the OP Control Valve range, or your Hydraulic Manifold requirements.

Oilpath Hydraulics Pty Ltd

PO Box 132 Edwardstown 5039 South Australia

P +61 8 8277 4933 F +61 8 8277 9126

E sales@oilpathhydraulics.com.au

