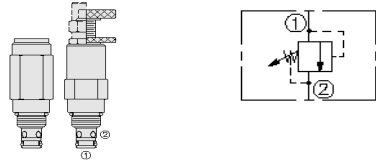


HYDRAFORCE CARTRIDGE QUICK REFERENCE

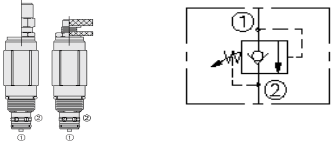
PRESSURE CONTROL

Relief, Direct-Acting Poppet



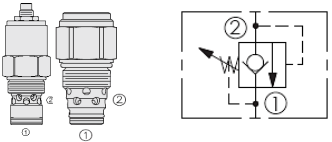
Cartridge Size	Flow	Adjustment	Line Body			
RV08-29A-6T-N-35	1.9 lpm / 0.5 gpm	A = Allen Key	4T	Alum.	7024640	7/16" UNF
RV08-20A-6T-N-*	22 lpm / 6 gpm	A = Allen Key	6T	Alum.	7024660	9/16" UNF
RV58-20A-6TD-P-46	22 lpm / 6 gpm	A = Allen Key	6TD	Duct. Iron	7151010	9/16" UNF
RV10-20A-8T-N-*	38 lpm / 10 gpm	A = Allen Key	8T	Alum.	7024280	3/4" UNF
RVD50-20A-8TD-N-*	114 lpm / 30 gpm	A = Allen Key	8TD	Duct. Iron	7151410	3/4" UNF
RVD50-20P-8TD-N-*	114 lpm / 30 gpm	Non-Adjustable	8TD	Duct. Iron	7151410	3/4" UNF
Seals		Pressure Range (* Select Pressure Range)				
N = Buna N	35 = 1000-3500PSI					
N = Buna N	5 = 50-600PSI	9 = 100-1300PSI	18 = 250-2600PSI	33 = 250-4000PSI		
P = Polyurethane	46 = 800-4600PSI					
N = Buna N	6 = 50-600PSI	12 = 150-1200PSI	23 = 250-2300PSI	33 = 250-3300PSI		
N = Buna N	8 = 200-850PSI	15 = 600-1500PSI	24 = 1400-2400PSI	32 = 2000-3200PSI	42 = 3000-4200PSI	50 = 4000-5075PSI
N = Buna N	8 = 200-850PSI	15 = 600-1500PSI	24 = 1400-2400PSI	32 = 2000-3200PSI	42 = 3000-4200PSI	50 = 4000-5075PSI

Relief, Pilot-Operated with Reverse Check



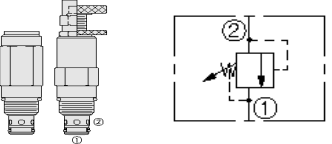
Cartridge Size	Flow	Adjustment	Line Body			
RV10-28A-8TD-N-*	114 lpm / 30 gpm	A = Allen Key	8TD	Duct. Iron	7151410	3/4" UNF
RV50-28A-8TD-N-35	114 lpm / 30 gpm	A = Allen Key	8TD	Duct. Iron	7151410	3/4" UNF
Seals		Pressure Range (* Select Pressure Range)				
N = Buna N	7 = 200-750PSI	35 = 751-3500PSI	42 = 751-4200PSI			
N = Buna N	50 = 250-5000PSI					

Relief, Direct-Acting Poppet, with Rev Flow Check



Cartridge Size	Flow	Adjustment	Line Body			
RVCV56-20A-12T-N-*	113 lpm / 30 gpm	A = Allen Key	12T	Alum.	7023230	1-1/16" UNF
RVCV10-22H-12T-N-*	68 lpm / 18 gpm	Non-Adjustable	12T	Alum.	7024290	1-1/16" UNF
Seals		Pressure Range (* Select Pressure Range)				
N = Buna N	30 = 2000-3000PSI	45 = 3100-4500PSI	61 = 4600-6100PSI			
N = Buna N	10 = 980-1380PSI	20 = 1300-2000PSI	30 = 1980-3000PSI	40 = 2300-4000PSI		

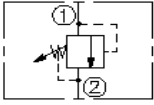
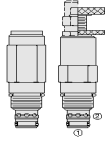
Relief, Differential Area Poppet



Cartridge Size	Flow	Adjustment	Line Body			
RV08-22A-6T-N-*	30 lpm / 8 gpm	A = Allen Key	6T	Alum.	7024660	9/16" UNF
RV10-22A-8T-N-*	114 lpm / 30 gpm	A = Allen Key	8T	Alum.	7024280	3/4" UNF
RV50-22A-8TD-N-50	75 lpm / 20 gpm	A = Allen Key	8TD	Duct. Iron	7151410	3/4" UNF
Seals		Pressure Range (* Select Pressure Range)				
N = Buna N	4 = 50-400PSI	7 = 100-700PSI	13 = 150-1300PSI	26 = 250-3600PSI		
N = Buna N	6 = 100-600PSI	13 = 150-1300PSI	25 = 250-2500PSI	35 = 350-3500PSI		
P = Polyurethane	50 = 500-5000PSI					

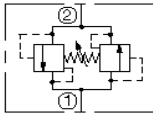
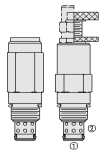
HYDRAFORCE CARTRIDGE QUICK REFERENCE

Relief, Pilot Operated, Spool



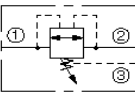
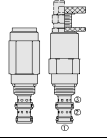
Cartridge Size	Flow	Adjustment	Line Body				
RV10-26A-8T-N-*	113 lpm / 30 gpm	A = Allen Key	8T	Alum.	7024280	3/4" UNF	
RV50-26A-8TD-P-50	113 lpm / 30 gpm	A = Allen Key	8TD	Duct. Iron	7151410	3/4" UNF	
RV12-26A-12T-N-*	170 lpm / 45 gpm	A = Allen Key	12T	Alum.	7022250	1-1/16" UNF	
RV52-26A-12TD-P-50	170 lpm / 45 gpm	A = Allen Key	12TD	Duct. Iron	7155010	1-1/16" UNF	
RV16-26A-12T-N-*	303 lpm / 80 gpm	A = Allen Key	12T	Alum.	7023230	1-1/16" UNF	
RV56-26A-12TD-P-50	379 lpm / 100 gpm	A = Allen Key	12TD	Duct. Iron	7152010	1-1/16" UNF	
Seals		Pressure Range (* Select Pressure Range)					
N = Buna N	4 = 100-400PSI	15 = 150-1500PSI	30 = 400-3000PSI				
P = Polyurethane	50 = 400-5000PSI						
N = Buna N	4 = 100-400PSI	15 = 200-1600PSI	30 = 400-3000PSI	35 = 500-3500PSI			
P = Polyurethane	50 = 1200-5000PSI						
N = Buna N	3 = 140-300PSI	6 = 230-600PSI	15 = 530-1500PSI	35 = 1200-3500PSI			
P = Polyurethane	50 = 3000-5000PSI						

Relief, Bi-Directional



Cartridge Size	Flow	Adjustment	Line Body				
CR10-28A-6T-N-*	60 lpm / 16 gpm	A = Allen Key	6T	Alum.	7024260	9/16" UNF	
Seals		Pressure Range (* Select Pressure Range)					
N = Buna N	24 = 200-2400PSI	30 = 2300-3000PSI					

Relief, Bi-Directional



Cartridge Size	Flow	Adjustment	Line Body				
CR08-38A-6T-N-*	30 lpm / 8 gpm	A = Allen Key	6T	Alum.	7024760	9/16" UNF	
Seals		Pressure Range (* Select Pressure Range)					
N = Buna N	10 = 50-1000PSI	30 = 1000-3000PSI					