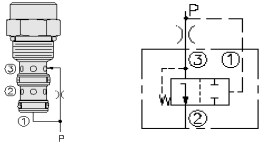


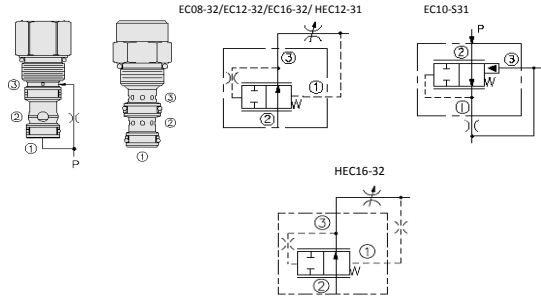
HYDRAFORCE CARTRIDGE QUICK REFERENCE

Pressure Compensators, Spool Element



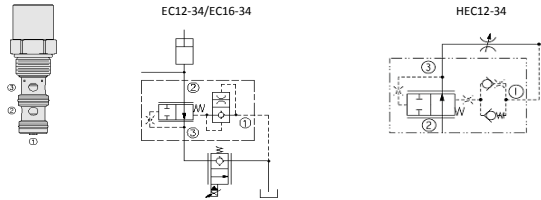
Cartridge Size	Flow	Line Body				Seals
EC10-30-8T-N-*	30 lpm / 8 gpm	8T	Alum.	7024380	3/4" UNF	N = Buna N
EC50-30-6TD-P-80	30 lpm / 8 gpm	6TD	Duct. Iron	7151500	9/16" UNF	P = Polyurethane
EC12-30-10T-N-*	56 lpm / 15 gpm	10T	Alum.	7022330	7/8" UNF	N = Buna N
Pressure Range (* Select Pressure Range)						
40 = 2.8bar/40PSI	80 = 5.5bar/80PSI	160 = 11bar/160PSI				
80 = 5.5bar/80PSI						
100 = 6.9bar/100PSI	160 = 11bar/160PSI					

Pressure Compensators Valves



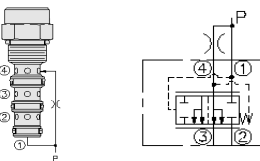
Cartridge Size	Flow	Line Body				Seals
EC10-S31-8T-N-*	30 lpm / 8 gpm	8T	Alum.	7026520	3/4" UNF	N = Buna N
EC08-32-6T-N-*	19 lpm / 5 gpm	6T	Alum.	7024760	9/16" UNF	N = Buna N
EC10-32-8T-N-*	38 lpm / 10 gpm	8T	Alum.	7024380	3/4" UNF	N = Buna N
EC12-32-10T-N-*	83 lpm / 22 gpm	10T	Alum.	7022330	7/8" UNF	N = Buna N
HEC12-32-12HT-U-*	83 lpm / 22 gpm	12HT	Duct. Iron	7158520	1-1/16" UNF	U = Urethane
EC16-32-12T-N-*	152 lpm / 40 gpm	12T	Alum.	7022650	1-1/16" UNF	N = Buna N
HEC16-32-16HT-U-*	152 lpm / 40 gpm	16HT	Duct. Iron	7157420	1-5/16" UNF	U = Urethane
Pressure Range (* Select Pressure Range)						
80 = 5.5bar/80PSI	110 = 7.6bar/110PSI					
80 = 5.5bar/80PSI	150 = 10.3bar/150PSI	250 = 17.2bar/250PSI				
80 = 5.5bar/80PSI	150 = 10.3bar/150PSI					
80 = 5.5bar/80PSI	160 = 11bar/160PSI					
80 = 5.5bar/80PSI	160 = 11bar/160PSI					
80 = 5.5bar/80PSI	160 = 11bar/160PSI					
80 = 5.5bar/80PSI	160 = 11bar/160PSI					

Pressure Compensators Valves With Damping and Load Holding



Cartridge Size	Flow	Line Body				Seals
EC12-34-10T-N-200	83 lpm / 22 gpm	10T	Alum.	7022330	7/8" UNF	N = Buna N
HEC12-34-12HT-U-200	83 lpm / 22 gpm	12HT	Duct. Iron	7158520	1-1/16" UNF	U = Urethane
EC16-34-16T-N-200	170 lpm / 45 gpm	16T	Alum.	7022660	1-5/16" UNF	N = Buna N
Pressure Range (* Select Pressure Range)						
200 = 13.8bar/200PSI						
200 = 13.8bar/200PSI						
200 = 13.8bar/200PSI						

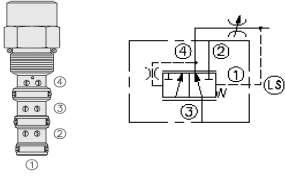
Pressure Compensators Valves, Priority Bypass Spool Element



Cartridge Size	Flow	Line Body				Seals
EC10-40-8T-N-*	38 lpm / 10 gpm	8T	Alum.	7024480	3/4" UNF	N = Buna N
EC50-40-6TD-P-*	38 lpm / 10 gpm	6TD	Duct. Iron	7151700	9/16" UNF	P = Polyurethane
EC12-40-10T-N-*	79 lpm / 21 gpm	10T	Alum.	7022480	7/8" UNF	N = Buna N
EC16-40-0-N-*	100 lpm / 26 gpm	N/A	N/A	N/A	N/A	N = Buna N
EC42-M40-20TD-N-*	303 lpm / 80 gpm	20TD	Duct. Iron	7154220	1-5/8" UNF	N = Buna N
Pressure Range (* Select Pressure Range)						
40 = 2.8bar/40PSI	80 = 5.5bar/80PSI	160 = 11bar/160PSI				
80 = 5.5bar/80PSI	160 = 11bar/160PSI					
100 = 6.9bar/100PSI	160 = 11bar/160PSI					
40 = 2.8bar/40PSI	80 = 5.5bar/80PSI	160 = 11bar/160PSI				
80 = 5.5bar/80PSI	150 = 10.3bar/150PSI					

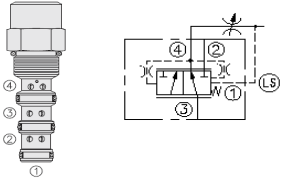
HYDRAFORCE CARTRIDGE QUICK REFERENCE

Pressure Compensator Valves, Load Sensing, Priority Type



Cartridge Size	Flow	Line Body				Seals
EC10-42-8T-N-*	38 lpm / 10 gpm	8T	Alum.	7024480	3/4" UNF	N = Buna N
EC50-42-6TD-P-*	38 lpm / 10 gpm	6TD	Duct. Iron	7151700	9/16" UNF	P = Polyurethane
EC12-42-10T-N-*	76 lpm / 20 gpm	10T	Alum.	7022480	7/8" UNF	N = Buna N
HEC12-42-12HT-U-*	95 lpm / 25 gpm	12HT	Duct. Iron	7158620	1-1/16" UNF	U = Urethane
EC16-42-0-N-*	150 lpm / 40 gpm	N/A	N/A	N/A	N/A	N = Buna N
Pressure Range (* Select Pressure Range)						
80 = 5.5bar/80PSI	150 = 10.3bar/150PSI					
80 = 5.5bar/80PSI	150 = 10.3bar/150PSI					
80 = 5.5bar/80PSI	160 = 11bar/160PSI					
80 = 5.5bar/80PSI	160 = 11bar/160PSI					
80 = 5.5bar/80PSI	150 = 10.3bar/150PSI					

Pressure Compensator Valves With Dynamic Load Sense



Cartridge Size	Flow	Line Body				Seals
EC10-43-8T-N-*	34 lpm / 9 gpm	8T	Alum.	7024480	3/4" UNF	N = Buna N
EC50-43-6TD-P-*	38 lpm / 10 gpm	6TD	Duct. Iron	7151700	9/16" UNF	P = Polyurethane
EC12-43-10T-N-*	95 lpm / 25 gpm	10T	Alum.	7022480	7/8" UNF	N = Buna N
HEC12-43-12HT-U-*	95 lpm / 25 gpm	12HT	Duct. Iron	7158620	1-1/16" UNF	U = Urethane
EC16-43-12T-N-*	150 lpm / 40 gpm	12T	Alum.	7023450	1-1/16" UNF	N = Buna N
HEC32-43-0-U-*	530 lpm / 140 gpm	N/A	N/A	N/A	N/A	U = Urethane
Pressure Range (* Select Pressure Range)						
80 = 5.5bar/80PSI	150 = 10.3bar/150PSI					
80 = 5.5bar/80PSI	150 = 10.3bar/150PSI					
80 = 5.5bar/80PSI	160 = 11bar/160PSI					
80 = 5.5bar/80PSI	160 = 11bar/160PSI					
80 = 5.5bar/80PSI	150 = 10.3bar/150PSI					
80 = 5.5bar/80PSI	150 = 10.3bar/150PSI					