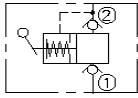
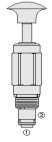


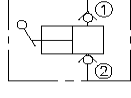
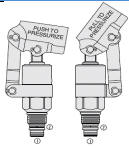
## HYDRAFORCE CARTRIDGE QUICK REFERENCE

### HAND PUMP

#### Hand Pump, Push and Release



HP10-20



HP10-21 & HP16-21

<i>Cartridge Size</i>	<i>Flow</i>	<i>Option (* Select Option)</i>	<i>Line Body</i>			
HP10-20	1.36 cc / .083 cu. in. Per Stroke		6T	Alum.	7024660	9/16" UNF
HP10-21	10.6 cc / 0.65 cu. in. Per Stroke		8T	Alum.	7024280	3/4" UNF
HP16-21	21.3 cc / 1.3 cu. in. Per Stroke		16T	Alum.	7023240	1-5/16" UNF