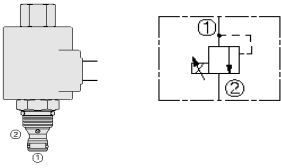


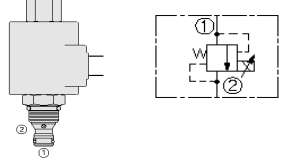
## HYDRAFORCE CARTRIDGE QUICK REFERENCE

### Proportional Pressure Control, Relief, Increasing Pressure with Increasing Current



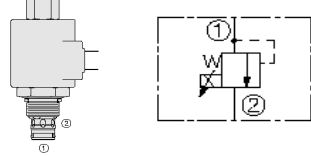
Cartridge Size	Flow	Option (* Select Option)	Line Body			
TS08-20-6T-N-***/**	3.79 lpm / 1 gpm	Pressure codes	6T	Alum.	7024660	9/16" UNF
TS38-20-6T-N-***/**	12 lpm / 3.2 gpm	276 bar = 40 345 bar = 50	6T	Alum.	7024660	9/16" UNF
*TS58-20-6TD-U-***/**	7.6 lpm / 2 gpm		6TD	Duct. Iron	7151010	9/16" UNF
<b>Seals</b>	<b>12 = 12VDC</b>	<b>12 = 12VDC</b>	<b>DS = Dual Spade</b>	<b>AG = Din (6316115/63162) ER = Deutsch DT04-2P (IP69K) (4303612/4303624)</b>		
N = Buna N	24 = 24VDC	24 = 24VDC	DG = Din (6306012/6306024)	EY = Metric-Pack 150 (IP69K)		
	115 = 115VAC		DL = Leadwires			
U = URATHANE	24 = 24VDC	24 = 24VDC	DG = Din (6306012/6306024)	EY = Metric-Pack 150 (IP69K)		
* Rated for 345 bar / 5000	115 = 115VAC		DL = Leadwires			

### Proportional Pressure Control, Relief, Decreasing Pressure with Increasing Current



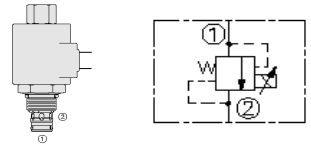
Cartridge Size	Flow	Option (* Select Option)	Line Body			
TS08-21-6T-N-***/**	3.79 lpm / 1 gpm	Pressure codes	6T	Alum.	7024660	9/16" UNF
TS38-21-6T-N-***/**	12 lpm / 3.2 gpm	276 bar = 40 345 bar = 50	6T	Alum.	7024660	9/16" UNF
*TS58-21-6TD-U-***/**	7.6 lpm / 2 gpm		6TD	Duct. Iron	7151010	9/16" UNF
<b>Seals</b>	<b>12 = 12VDC</b>	<b>12 = 12VDC</b>	<b>DS = Dual Spade</b>	<b>AG = Din (6316115/63162) ER = Deutsch DT04-2P (IP69K) (4303612/4303624)</b>		
N = Buna N	24 = 24VDC	24 = 24VDC	DG = Din (6306012/6306024)	EY = Metric-Pack 150 (IP69K)		
	115 = 115VAC		DL = Leadwires			
U = URATHANE	24 = 24VDC	24 = 24VDC	DG = Din (6306012/6306024)	EY = Metric-Pack 150 (IP69K)		
* Rated for 345 bar / 5000	115 = 115VAC		DL = Leadwires			

### Prop Pressure Cont, Pilot-Op Relief, Increasing Pressure with Increasing Current



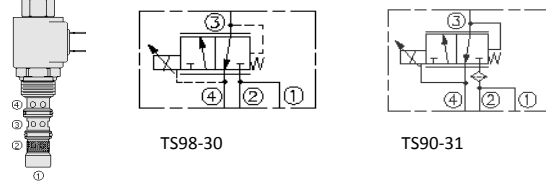
Cartridge Size	Flow	Option (* Select Option)	Line Body			
TS10-26*-*-8T-N-***/**	95 lpm / 25 gpm	Pressure codes	8T	Alum.	7024280	3/4" UNF
TS12-26*-*-12T-N-***/**	189 lpm / 50 gpm	A = 207 bar b = 159 bar c	12T	Alum.	7022250	1-1/16" UNF
		M = Manual Override				
<b>Seals</b>	<b>12 = 12VDC</b>	<b>12 = 12VDC</b>	<b>DS = Dual Spade</b>	<b>AG = Din (6316115/63162) ER = Deutsch DT04-2P (IP69K) (4303612/4303624)</b>		
N = Buna N	24 = 24VDC	24 = 24VDC	DG = Din (6306012/6306024)	EY = Metric-Pack 150 (IP69K)		
	115 = 115VAC		DL = Leadwires			
U = URATHANE	24 = 24VDC	24 = 24VDC	DG = Din (6306012/6306024)	EY = Metric-Pack 150 (IP69K)		
* Rated for 345 bar / 5000	115 = 115VAC		DL = Leadwires			

### Prop Pressure Cont, Pilot-Op Relief, Decreasing Pressure with Increasing Current



Cartridge Size	Flow	Option (* Select Option)	Line Body			
TS08-27	19 lpm / 5 gpm	Pressure codes	6T	Alum.	7024660	9/16" UNF
TS10-27	76 lpm / 20 gpm	A = 207 bar B = 138 bar C = 69 bar				
TS12-27	189 lpm / 50 gpm	F = Factory set	8T	Alum.	7024380	3/4" UNF
<b>Seals</b>	<b>12 = 12VDC</b>	<b>12 = 12VDC</b>	<b>DS = Dual Spade</b>	<b>AG = Din (6316115/63162) ER = Deutsch DT04-2P (IP69K) (4303612/4303624)</b>		
N = Buna N	24 = 24VDC	24 = 24VDC	DG = Din (6306012/6306024)	EY = Metric-Pack 150 (IP69K)		
	115 = 115VAC		DL = Leadwires			
U = URATHANE	24 = 24VDC	24 = 24VDC	DG = Din (6306012/6306024)	EY = Metric-Pack 150 (IP69K)		
* Rated for 345 bar / 5000	115 = 115VAC		DL = Leadwires			

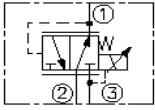
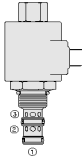
### Proportional Pressure Control, Reducing/Relieving, Internal Pilot Operated



Cartridge Size	Flow	Option (* Select Option)	Line Body			
TS98-30-6T-N-***/**	30 lpm / 8 gpm		6T	Alum.	7021680	9/16" UNF
TS90-31-6T-N-***/**	38 lpm / 10 gpm		6T	Alum.	7021680	9/16" UNF
<b>Seals</b>	<b>12 = 12VDC</b>	<b>12 = 12VDC</b>	<b>DS = Dual Spade</b>	<b>AG = Din (6316115/63162) ER = Deutsch DT04-2P (IP69K) (4303612/4303624)</b>		
N = Buna N	24 = 24VDC	24 = 24VDC	DG = Din (6306012/6306024)	EY = Metric-Pack 150 (IP69K)		
	115 = 115VAC		DL = Leadwires			
	24 = 24VDC	24 = 24VDC	DG = Din (6306012/6306024)	EY = Metric-Pack 150 (IP69K)		
	115 = 115VAC		DL = Leadwires			

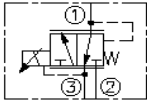
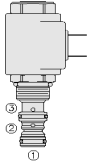
## HYDRAFORCE CARTRIDGE QUICK REFERENCE

### Proportional Pressure Control, Reducing/Relieving, Pilot Operated



Cartridge Size	Flow	Option (* Select Option)	Line Body			
TS10-36-8T-N-***/**	60 lpm / 16 gpm		8T	Alum.	7024280	3/4" UNF
TS12-3612T-N-***/**	189 lpm / 50 gpm		12T	Alum.	7022250	1-1/16" UNF
<b>Seals</b>	<b>12 = 12VDC</b>	<b>12 = 12VDC</b>	<b>DS = Dual Spade</b>	<b>AG = Din (6316115/63162) ER = Deutsch DT04-2P (IP69K) (4303612/4303624)</b>		
N = Buna N	24 = 24VDC	24 = 24VDC	DG = Din (6306012/6306024)		EY = Metric-Pack 150 (IP69K)	
	115 = 115VAC		DL = Leadwires			
	24 = 24VDC	24 = 24VDC	DG = Din (6306012/6306024)		EY = Metric-Pack 150 (IP69K)	
	115 = 115VAC		DL = Leadwires			

### Proportional Pressure Control, Reducing/Relieving, Direct Operated



Cartridge Size	Flow	Option (* Select Option)	Line Body			
EHPRO8-33*-6T-N-***/**	4 lpm / 1.05 gpm	M = MANUAL O/RIDE	6T	Alum.	7024760	9/16" UNF
<b>Seals</b>	<b>12 = 12VDC</b>	<b>12 = 12VDC</b>	<b>DS = Dual Spade</b>	<b>AG = Din (6316115/63162) ER = Deutsch DT04-2P (IP69K) (4303612/4303624)</b>		
N = Buna N	24 = 24VDC	24 = 24VDC	DG = Din (6306012/6306024)		EY = Metric-Pack 150 (IP69K)	
	115 = 115VAC		DL = Leadwires			
U = URATHANE	24 = 24VDC	24 = 24VDC	DG = Din (6306012/6306024)		EY = Metric-Pack 150 (IP69K)	
* Rated for 345 bar / 5000	115 = 115VAC		DL = Leadwires			