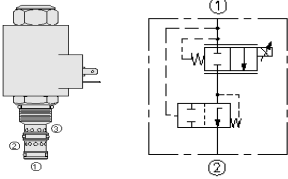


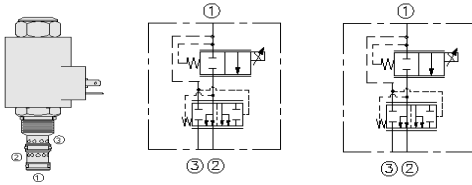
HYDRAFORCE CARTRIDGE QUICK REFERENCE

Proportional Flow Regulator, Pressure Compensated, 2-Port, Normally Closed



Cartridge Size	Flow	Option (* Select Option)	Line Body				
PFR70-33E*-8T-N-***/**	30 lpm / 8 gpm	M = MANUAL O/RIDE	8T	Alum.	7026520	3/4" UNF	
PFR72-33L*-12T-N-***/**	64 lpm / 17 gpm		12T	Alum.	7022340	1-1/16" UNF	
Seals	12 = 12VDC	12 = 12VDC	DS = Dual Spade	AG = Din (6316115/63162)			ER = Deutsch DT04-2P (IP69K) (4303612/4303624)
N = Buna N	24 = 24VDC	24 = 24VDC	DG = Din (6306012/6306024)	DL = Leadwires			EY = Metric-Pack 150 (IP69K)
	115 = 115VAC			DL = Leadwires			
U = URATHANE	24 = 24VDC	24 = 24VDC	DG = Din (6306012/6306024)	DL = Leadwires			EY = Metric-Pack 150 (IP69K)
	115 = 115VAC			DL = Leadwires			

Proportional Flow Regulator, Pressure Comp 3-Port, Nor Closed, Priority Bypass



Cartridge Size	Flow	Option (* Select Option)	Line Body				
PFR70-33F*-8T-N-***/**	30 lpm / 8 gpm	M = MANUAL O/RIDE	8T	Alum.	7026520	3/4" UNF	
PFR70-33J*-8T-N-***/**	30 lpm / 8 gpm		8T	Alum.	7026520	3/4" UNF	
PFR72-33J*-12T-N-***/**	64 lpm / 17 gpm		12T	Alum.	7022340	1-1/16" UNF	
Seals	12 = 12VDC	12 = 12VDC	DS = Dual Spade	AG = Din (6316115/63162)			ER = Deutsch DT04-2P (IP69K) (4303612/4303624)
N = Buna N	24 = 24VDC	24 = 24VDC	DG = Din (6306012/6306024)	DL = Leadwires			EY = Metric-Pack 150 (IP69K)
	115 = 115VAC			DL = Leadwires			
U = URATHANE	24 = 24VDC	24 = 24VDC	DG = Din (6306012/6306024)	DL = Leadwires			EY = Metric-Pack 150 (IP69K)
	115 = 115VAC			DL = Leadwires			

PFR70-33

PFR70 & PFR72-33J