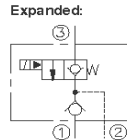
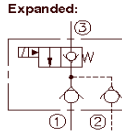
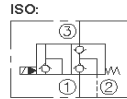
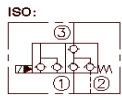
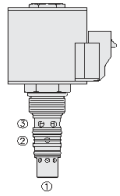


HYDRAFORCE CARTRIDGE QUICK REFERENCE

Blocking/Poppet, 3-Port, Normally Closed with Check-Isolated Load Sense

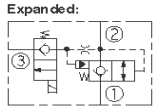
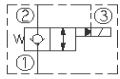
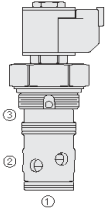


SVCL10-30 & SVCL16-30

SVCL10-32

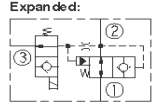
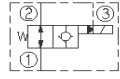
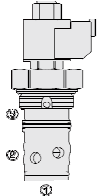
Cartridge Size	Flow	Option (* Select Option)	Line Body			
SVCL10-30*-8T-N-***/**	57 lpm / 15 gpm	M = MANUAL O/RIDE	8T	Alum.	7024380	3/4" UNF
SVCL16-30*-16HT-N-***/**	151 lpm / 40 gpm		16HT	Duct. Iron	7158420	1-5/16" UNF
SVCL10-32*-8T-N-***/**	57 lpm / 15 gpm		8T	Alum.	7024380	3/4" UNF
Seals	Voltage (Standard Coils)*	Voltage (E Coils)***	Termination (Standard V)	Termination (Standard AC)	Termination (Standard E Coils)**	
N = Buna N	12 = 12VDC	12 = 12VDC	DS = Dual Spade	AG = Din (6316115/63162)	ER = Deutsch DT04-2P (IP69K) (4303612/4303624)	
	24 = 24VDC	24 = 24VDC	DG = Din (6306012/6306024)		EY = Metric-Pack 150 (IP69K)	
	115 = 115VAC		DL = Leadwires			
	230 = 230VAC		DL/W = Leadwires/weatherpak			
			DR = Deutsch DT04-2P			

Blocking/Poppet, 3-Port, Normally Closed



Cartridge Size	Flow	Option (* Select Option)	Line Body			
SV20-S38*-20T-N-***/**	378 lpm / 100 gpm	M = MANUAL O/RIDE	20T	Alum.	7022580	1-5/8" UNF
Seals	Voltage (Standard Coils)*	Voltage (E Coils)***	Termination (Standard V)	Termination (Standard AC)	Termination (Standard E Coils)**	
N = Buna N	12 = 12VDC	12 = 12VDC	DS = Dual Spade	AG = Din (6316115/63162)	ER = Deutsch DT04-2P (IP69K) (4303612/4303624)	
	24 = 24VDC	24 = 24VDC	DG = Din (6306012/6306024)		EY = Metric-Pack 150 (IP69K)	
	115 = 115VAC		DL = Leadwires			
	230 = 230VAC		DL/W = Leadwires/weatherpak			
			DR = Deutsch DT04-2P			

Blocking/Poppet, 3-Port, Normally Open



Cartridge Size	Flow	Option (* Select Option)	Line Body			
SV20-S39*-20T-N-***/**	378 lpm / 100 gpm	M = MANUAL O/RIDE	20T	Alum.	7022580	1-5/8" UNF
Seals	Voltage (Standard Coils)*	Voltage (E Coils)***	Termination (Standard V)	Termination (Standard AC)	Termination (Standard E Coils)**	
N = Buna N	12 = 12VDC	12 = 12VDC	DS = Dual Spade	AG = Din (6316115/63162)	ER = Deutsch DT04-2P (IP69K) (4303612/4303624)	
	24 = 24VDC	24 = 24VDC	DG = Din (6306012/6306024)		EY = Metric-Pack 150 (IP69K)	
	115 = 115VAC		DL = Leadwires			
	230 = 230VAC		DL/W = Leadwires/weatherpak			
			DR = Deutsch DT04-2P			