



### Motorized Flow Control Valve with Pressure Compensation

Page Number  
**80.10.20**

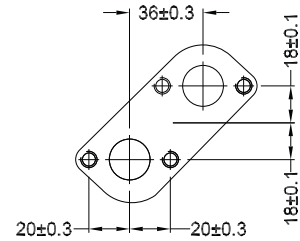
#### FEATURES:

- Max inlet flow 60 l/min.
- Regulated flow range 0 - 50 l/min.
- Maximum working pressure 210 Bar
- Pressure compensated
- Suitable for use with motors connected in series
- Aluminium 2011 T6 body with anodising
- Controlled directly from 12 or 24 Volt DC supply  
No need for additional electronic amplifier
- Maximum current 0.5 Amps
- Direct mounting to the following motors interface: OMP, OMR, EPM, EPRM, GMP
- Standard electrical cable length: 1.3 m

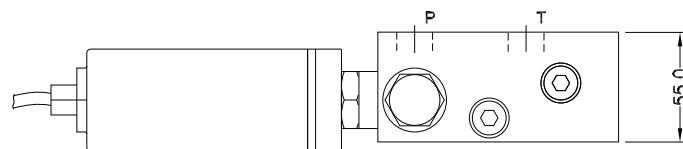
**MODEL** OP700

**BODY NO.** 227176

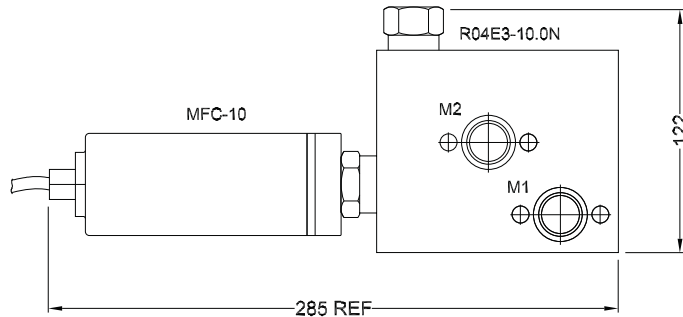
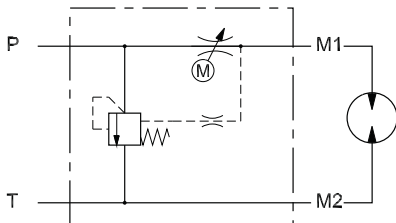
#### Motor Interface



Ports: 1/2" BSPP



For 24V DC operation add 100 Ohm resistor in series with motor



#### ORDERING CODE

OP700 - - -

**Regulated Flow Range**  
05 - 0-15 l/min.  
15 - 0-50 l/min.

**Operating Speed**  
03 - 3.5 sec.  
07 - 7 sec.  
24 - 24 sec.  
48 - 48 sec.

**Compensating Pressure**  
05 - 5 Bar  
10 - 10 Bar  
15 - 15 Bar  
Consult factory for information on adjustable compensators