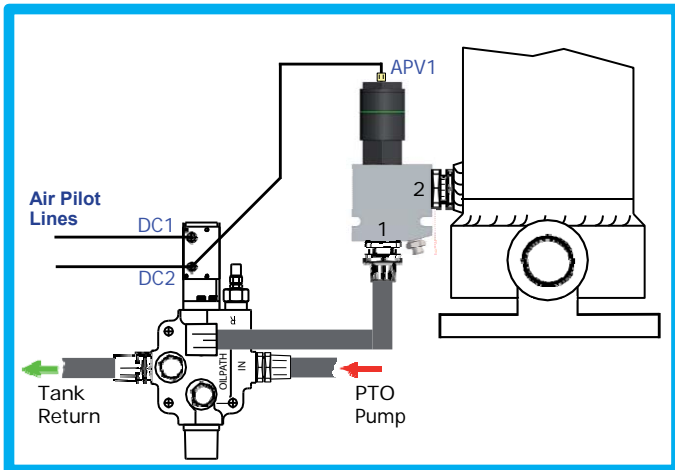


# HOIST CHECK VALVE

The economical, High Quality sensible solution for the Tipper Industry

## Typical Installation



## DESCRIPTION

The valve is an inline, direct acting, pneumatically operated hoist check valve for use in blocking or load holding. The valve is direct mounted to the Lift cylinder by its hydraulic connecting fitting and secured utilising clamping holes provided. It's ease of fitment gives it the highest degree of suitability for both new installations and retro fits to existing Tipper. Refer to the installation drawing.

## OPERATION

**Raise:** Flow comes from the truck mounted directional valve, enters port 1 of the APV valve and exits its port number 2 straight into the Lift Cylinder.

**Lower:** Air pilot pressure simultaneously operates the Truck directional valve to lower function as well as opening the check valve in the APV valve from port 2 to 1 which then allows oil to leave the cylinder and return to tank via the directional valve.

## COMPLIANCE

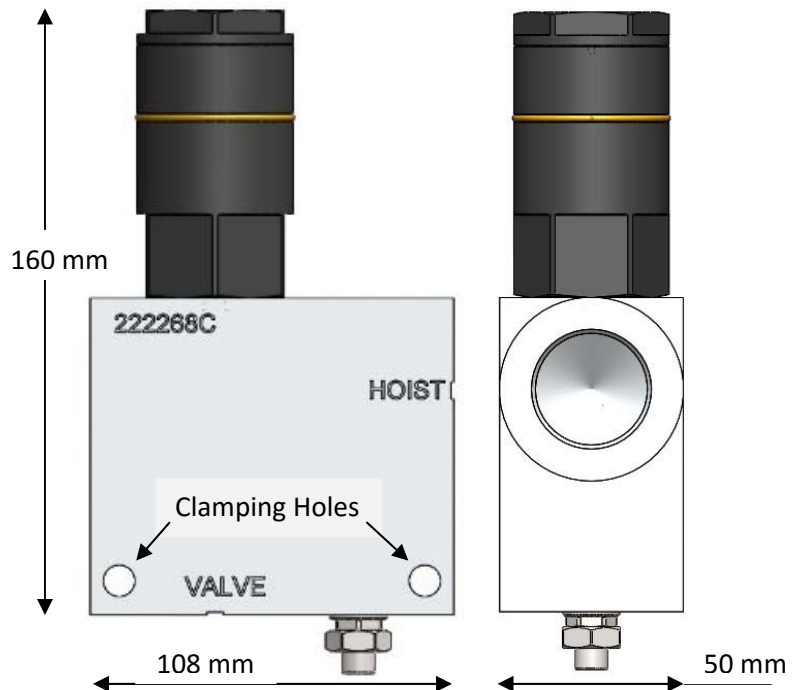
This valve can be utilised as the controlled lowering device on AS1418.8 compliant Tipper Hydraulic Circuits.

## Air Pilot Operation

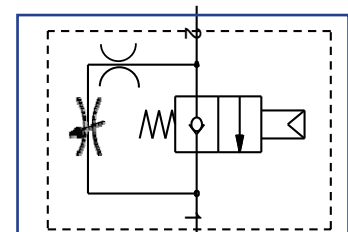
| Function | DC1      | DC2      | APV1     |
|----------|----------|----------|----------|
| Raise    | Pressure | Vent     | Vent     |
| Hold     | Vent     | Vent     | Vent     |
| Lower    | Vent     | Pressure | Pressure |

## FEATURES & RATINGS

- Easy installation to new and existing vehicles.
- Low pressure drop for fast lowering.
- Hard anodised air cylinder with stainless piston for corrosion protection and extended wear life.
- High quality HydraForce cartridge valve Nose, Poppet, & Spring
- Internal leakage: 0.15cc/minute (3 drops/minute) maximum at 210 bar.
- Maximum operating pressure 210 bar (3,000psi).
- Flow capability: see performance chart below.
- Minimum air pressure to operate 2.1bar (30psi).



## Schematic OP-APV-16-22



[www.oilpathhydraulics.com.au](http://www.oilpathhydraulics.com.au)

## Flow Performance

